

User's Guide

**TRENDNET<sup>®</sup>**



**Indoor/Outdoor 4MP H.265 WDR PoE IR  
Dome Network Camera**

**TV-IP1315PI**

## Contents

- Product Overview ..... 4**
  - Package Contents .....4
  - Front View .....5
  - Angle Adjustment .....5
  - Reset Button .....5
  - Warnings.....6
  - Cautions.....6
- Plan for installation location ..... 7**
  - Viewing angle .....7
  - Weather Conditions.....7
- Hardware Installation ..... 8**
  - Cabling .....8
  - Waterproof cap .....8
- Setup Your Camera with Camera Utility..... 8**
  - Logging-in to the Camera for the First Time (Windows) ..... 10
  - Logging-in to the Camera for the First Time (OS X) ..... 12
  - Live View..... 16
  - Playback..... 17
  - Search for video recordings..... 17
  - Time Line ..... 17
  - Playback..... 18
  - Slice images from video playback..... 18
  - Download sections of video ..... 19
  - Download snapshots ..... 19
    - Log ..... 20
  - Search for logs ..... 20

- System Information ..... 21
- System Configuration..... 22**
  - Device Settings ..... 22
  - User Accounts..... 23
  - Time Settings ..... 23
  - Daylight Savings..... 24
  - Live View Settings..... 24
  - Maintenance..... 25
- Network Settings ..... 26**
  - TCP/IP ..... 26
  - Port..... 27
  - DDNS..... 28
  - PPPoE..... 28
  - SNMP ..... 29
  - 802.1X..... 30
  - IP Address Filter ..... 31
  - Quality of Service (QoS)..... 31
  - UPnP ..... 32
- Video Settings..... 32**
  - Video Format ..... 32
  - Display Settings..... 34
  - On Screen Display Settings..... 36
  - Text Overlay..... 37
  - Privacy Mask..... 37
  - Video Recording ..... 38
- Events ..... 39**
  - Motion Detection ..... 39

|   |           |
|---|-----------|
| Video Tampering .....   | 41        |
| Notification .....  | 42        |
| Snapshot .....  | 43        |
| Email .....   | 44        |
| <b>Network Storage.....</b>                                   | <b>45</b> |
| Network Storage.....  | 45        |
| Storage Management .....                                      | 46        |
| FTP Server .....  | 47        |
| <b>Appendix .....</b>   | <b>48</b> |
| Direct video access - RTSP .....                              | 48        |
| <b>Regulations.....</b>                                       | <b>48</b> |
| Federal Communication Commission Interference Statement ..... | 48        |
| RoHS .....  | 48        |
| Europe – EU Declaration of Conformity .....                   | 49        |
| <b>Limited Warranty.....</b>                                  | <b>50</b> |

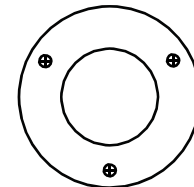
## Product Overview



## Package Contents

TV-IP1315PI package includes:

- TV-IP1315PI
- Weather seal
- Torx Security Allen Key
- Quick installation guide
- Camera mounting hardware



Drilling Template

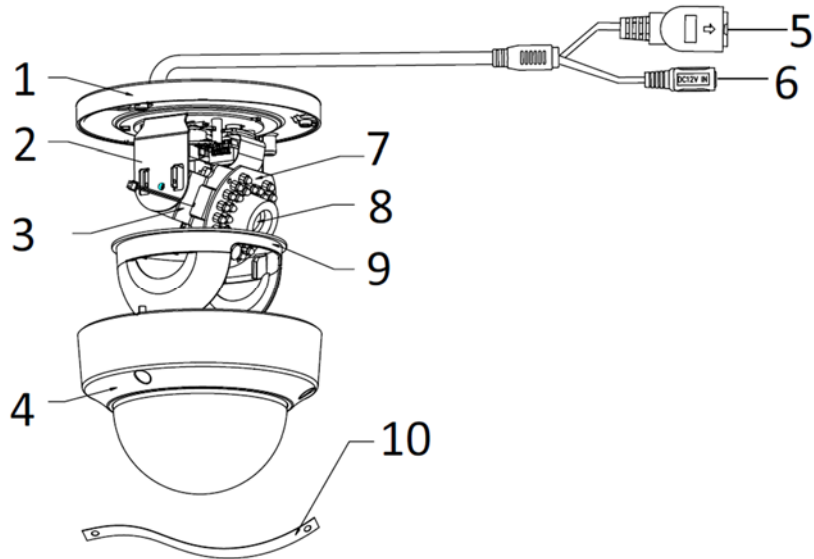


Mounting Screws



Network Cable  
Waterproof Accessories

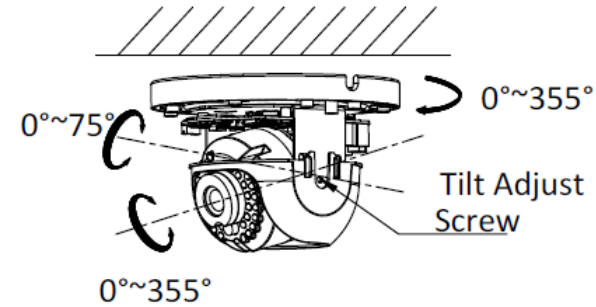
*If any package content is missing or damaged, please contact the retail store, online retailer, or reseller/distributor from which the product was purchased.*

**Front View**

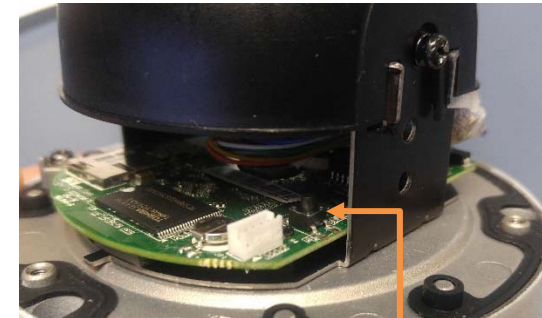
1. Mounting base
2. Horizontal stand
3. Vertical stand
4. Lower dome
5. 10/100Mbps PoE network port
6. Power port (optional)
7. Infra-red lamps
8. Lens
9. Black Liner
10. Safety rope

**Angle Adjustment**

Loosen the tilt lock screws, adjust the tilting position in a range, and tighten the tilt lock screws.

**Reset Button**

Push and hold the reset button then power on the camera. Keep holding the reset button for more than 10 seconds to reset configuration to factory default.



Reset Button

## Warnings

Serious injury or death may be caused if any of these warnings are neglected. Follow these safety guards to prevent serious injury or death.

- If using the power adapter, please choose the power adapter that meets the safety extra low voltage (SELV) standard or IEC60950-1 and Limited Power Source standard.
- If the product does not work properly, please contact your dealer or the nearest service center. Never attempt to disassemble the camera yourself. Disassembling the product will void the warranty and may cause harm or injury.
- To reduce the risk of fire or electrical shock, do not expose this product to rain or water.
- The installation should be done by a qualified service person and should conform to all construction and electric regulations and other local codes.

## Cautions

Injury or equipment damage may be caused if any of these cautions are neglected. Follow these precautions to prevent potential injury or material damage.

- Make sure the power supply voltage is correct before using the Camera.
- Do not drop the camera or subject to physical shock.
- Do not touch sensor modules with fingers. If cleaning is necessary, use a clean cloth with a bit of ethanol and wipe it gently. If the camera will not be used for an extended period of time, put on the lens cap to protect the sensor from dirt.
- Do not aim the camera lens at the strong light such as the Sun or an incandescent lamp. Strong light can damage the camera sensor.
- The sensor may be burned out by a laser beam, so when any laser equipment is being used, make sure that the surface of the sensor will not be exposed to the laser beam.
- Do not place the camera in extremely hot, cold temperatures (the operating temperature should be between -10°C to 60°C), dusty or damp environment, and do not expose it to high electromagnetic radiation.
- To avoid heat accumulation, good ventilation is required for a proper operating environment.
- Keep out of water and any liquid.
- While shipping, the camera should be packed in its original packing.

## Plan for installation location

### Viewing angle

The TV-IP1315PI is a dome camera with a focused viewing angle (81°) that provides non-distorted and detailed images. Choose the location where has good angle to shoot the image you expect to see. The motion detection area should also be considered when installing the camera.

### Weather Conditions

The TV-IP1315PI is a small dome camera, which fits most installations indoor and outdoor. The camera can work under a wide range of weather conditions. For severe weather conditions, a camera housing with temperature and moisture control is recommended. Using the camera in milder weather conditions will help extend the camera's product life and preserve the quality of the video image.

- **Moisture:** Avoid damp or moist environments whenever you can. The TV-IP1315PI is an IP66 grade water proof camera, and it will work in moist environments. However, rain may affect the picture quality, especially at night, water may reflect the light from the infra-red illumination and degrade picture quality.
- **Temperature:** TV-IP1315PI works within a specified temperature range. Areas with severe temperatures should be avoided when installing the camera. It's recommended that you use an enclosure with a heater and blower if you plan on using this camera outside of the specified temperature range.

- **Sunlight:** Avoid direct sun light exposure. Direct sun light will damage the image sensor. If sunlight is necessary for your viewing purposes, provide protection for the image sensor.
- **Lighting:** Consider installing your camera faces the same direction of the light sources. Shooting images with top-down position outdoor or next to the existing light source are good choices. Avoid the light source if it creates a shade that darkens the viewing area.

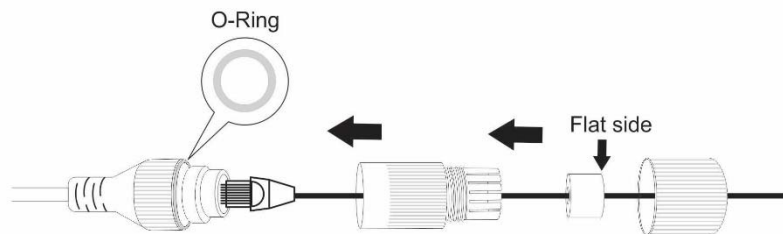
## Hardware Installation

### Cabling

It's recommended that the wiring the cable in your home or office by a professional. If you already have the cable deployed, make sure the cable and the connectors meet the category 5 Ethernet cable standards. At least 2 pairs of twisted lines are required for power and data. Poor cable quality may cause unexpected problems. Testing your cable or running a new cable is suggested for new camera installation.

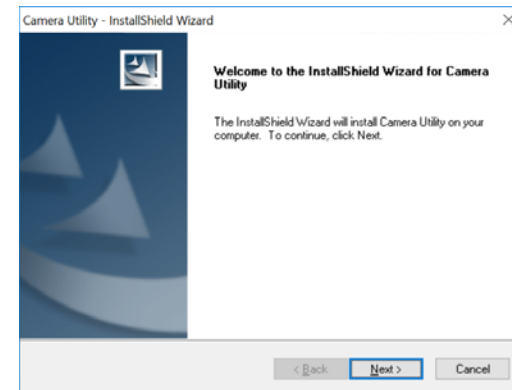
### Waterproof cap

The TV-IP1315PI itself is IP66 grade water and dust proof. There is a set of network cable water proof caps that comes with the package as well. Run your cable going through the accessories, and then crimp the cable with an RJ45 module. Plug in the network cable and then tighten the waterproof cap to prevent water running into camera through the cable.

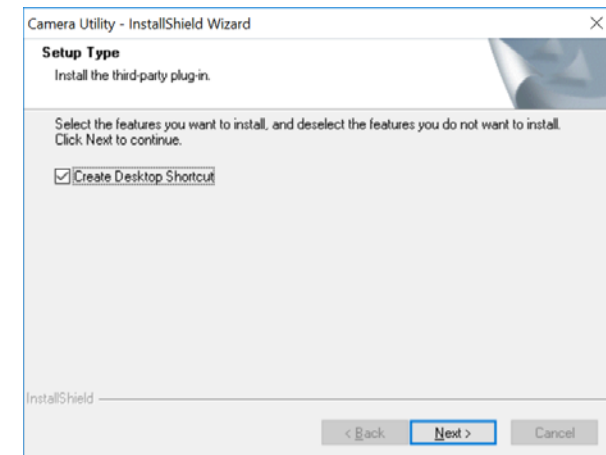


## Setup Your Camera with Camera Utility

1. Please download the utility at <http://www.trendnet.com/camerautility>
2. Extract the downloaded file and double click on the camera utility file to install

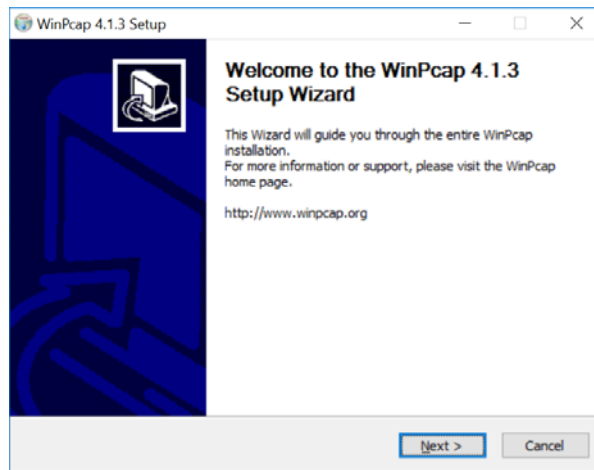


3. Last, click Next to finish the installation.

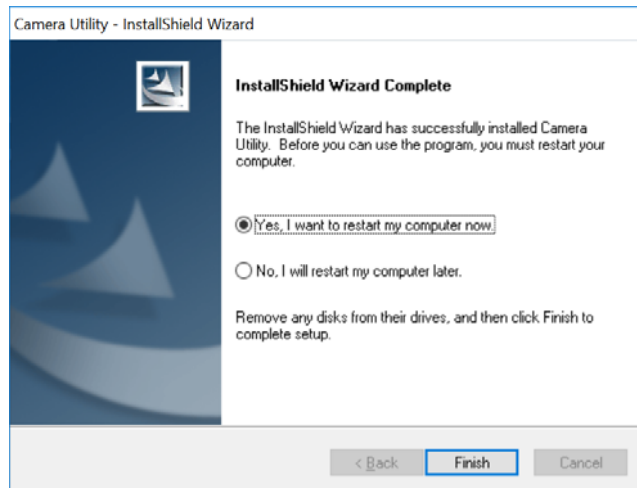




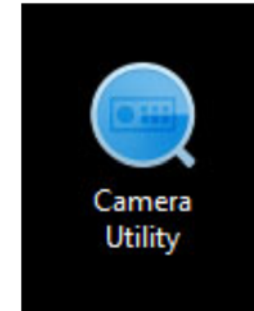
- This will also require you to Install WinPcap program if you don't have this installed before, please follow the on screen Instructions to Install It.



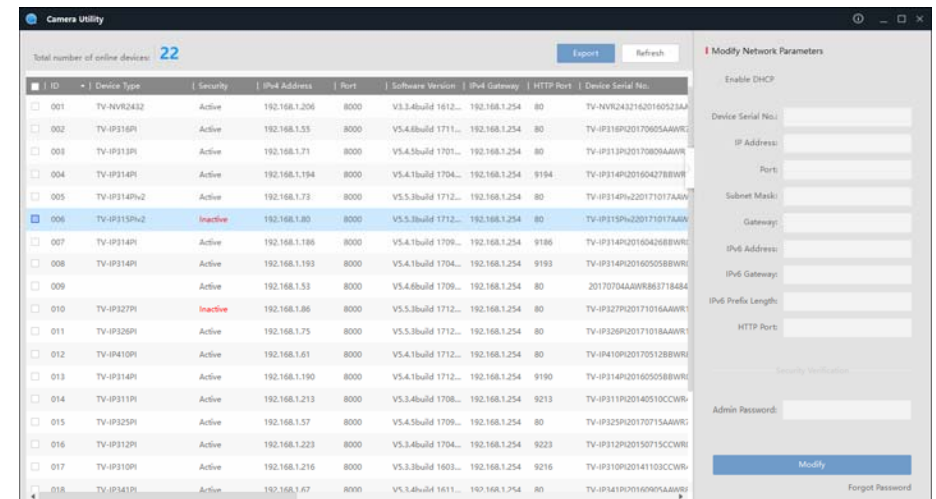
- Restart the computer after the Installation.



- After the computer has restarted, double click on the Camera Utility icon to launch the program.



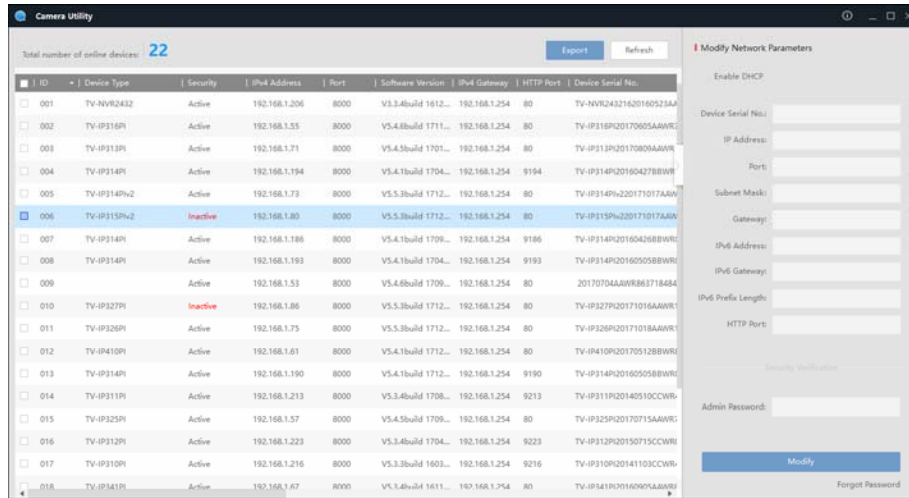
- Find the camera you would like to access and configure then double click on the IP address.



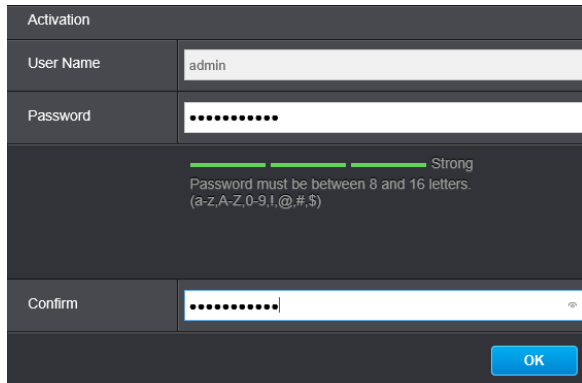
- Continue to the next section **Access your Camera with the Web Browser** for detail configurations of the camera.

### Logging-in to the Camera for the First Time (Windows)

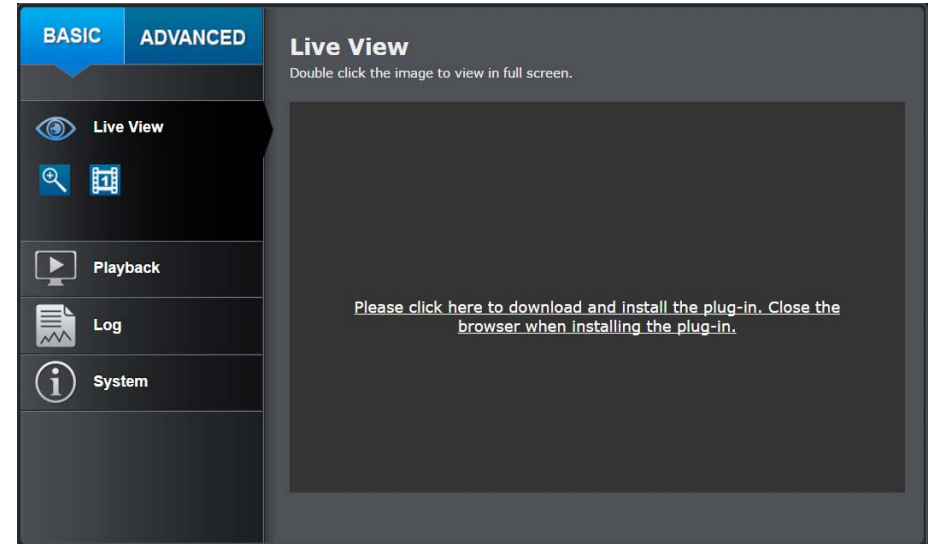
1. Find the camera from the Utility and double click on the IP address to open the browser.



2. Activate the **admin** User Account by entering your desired password, and then click **OK**.



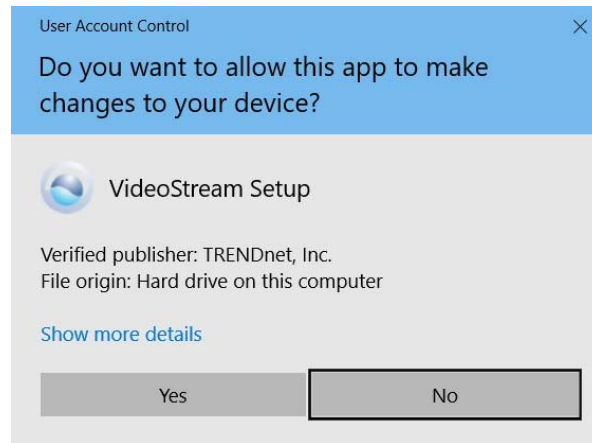
3. The camera management page will detect if you installed the camera video streaming plug-in or not. . Click the link to download the plug-in from the camera. (For Internet Explorer and Safari only) Google and Firefox users, skip to step 9.



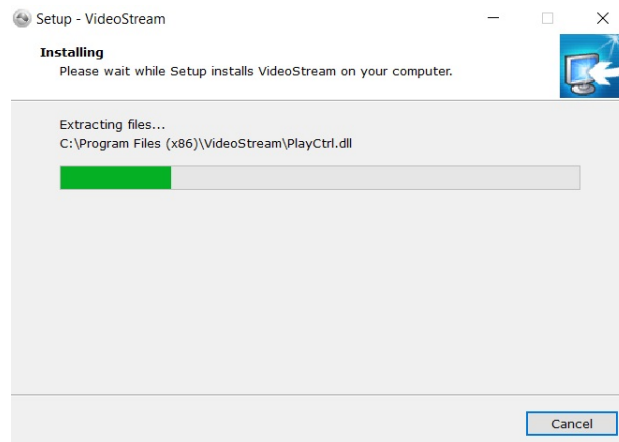
4. Download the plug-in to your computer and then and close your browser. Launch the plug-in installation to install the plug-in.



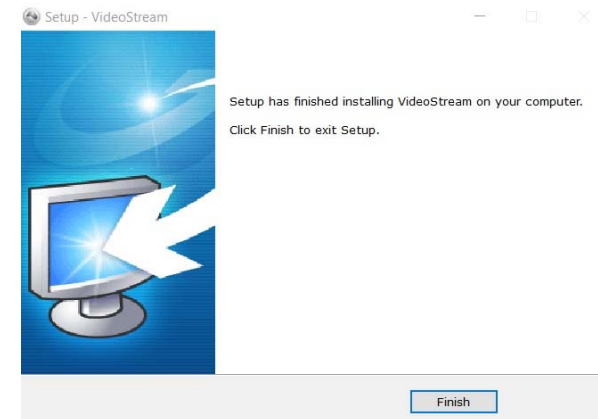
5. Permission request may show up depends on the Internet security settings on your computer. Click **Yes** to install the plug-in.



6. Click **Next** to install the plug-in.



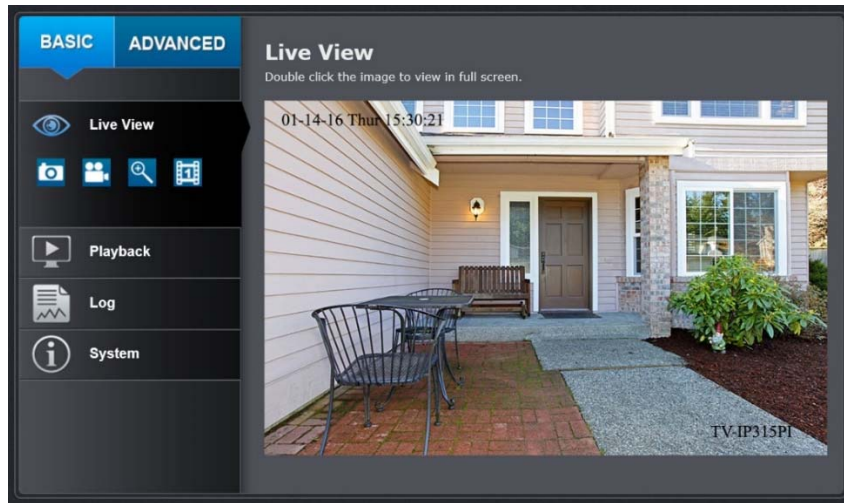
7. Click **Finish** to finish the installation.



8. Open the browser and login again, enter the user name **admin** and new password again to start secured session.

|                                      |  |
|--------------------------------------|--|
| User Name                            | <input type="text"/>                     |
| Password                             | <input type="password"/>                 |
| Languages                            | English <input type="button" value="v"/> |
| <input type="button" value="Login"/> |  |

- Refresh the browser and the Live View page will show up and begin streaming video



### Logging-in to the Camera for the First Time (OS X)

- Open the web browser on your computer. In the address bar, enter the default IP address of the camera 192.168.10.30. If the camera is connected to a router/network, please use a windows machine to setup the camera with Camera Utility.

2.

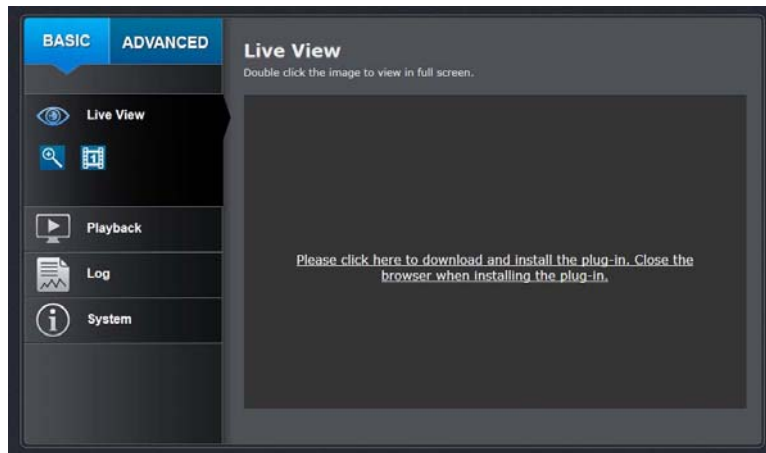


- Enter the user name, **admin**, and the default password, **admin**, and then click **OK**.

|  |  |
|--|--|
| Activation   |  |
| User Name  | <input type="text" value="admin"/>     |
| Password   | <input type="password" value="....."/> |
| <div style="text-align: right;"> <span style="color: green;">■■■■■■■■■■</span> Strong<br/>           Password must be between 8 and 16 letters.<br/>           (a-z,A-Z,0-9,!,@,#,\$)         </div> |  |
| Confirm  | <input type="password" value="....."/> |
| <input type="button" value="OK"/>  |  |

- The camera management page will detect if you installed the camera webcomponent plug-in or not. Click the link to download the plug-in from the camera.

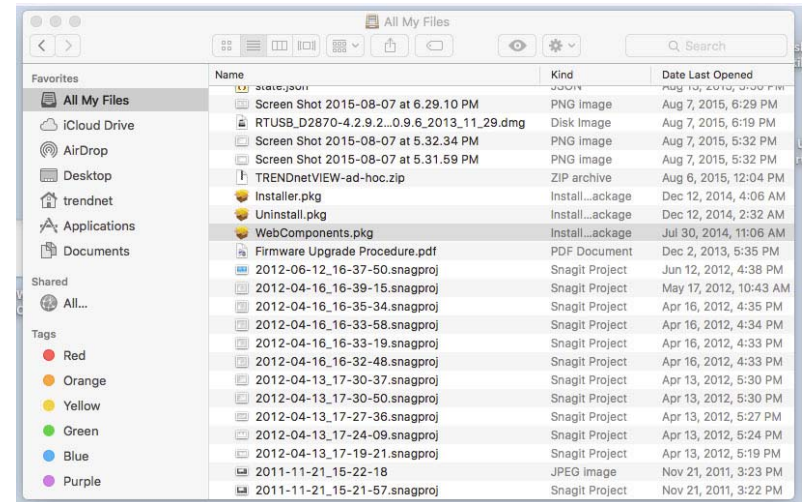
*Note: Internet connection is required to download the plug-in. If you do not have Internet access, you can find the plug-in on the CD comes with the package under /Mac folder.*



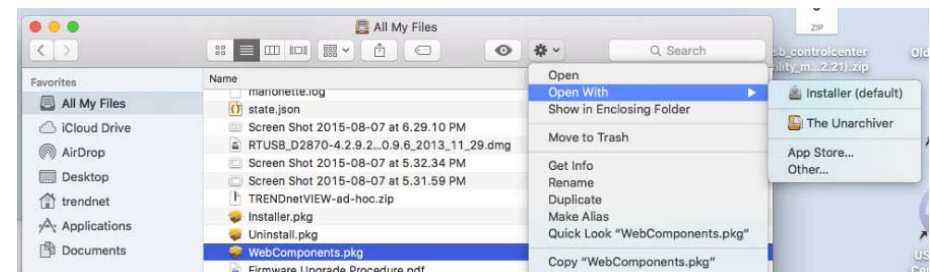
- Quit your browser completely by **command-Click** on the browser icon and then click **Quit** before installing the plug-in.



- Go to the **Finder** and navigate to the **Download** folder. **Command-Click** the **WebComponents.pkg** and then click **Open**. (If you are install the plug-in from the CD when you don't have internet connection, just browse to /Mac folder and double click the **WebComponents.pkg** file.)



- Click **Open with** → **Installer** to start installation.



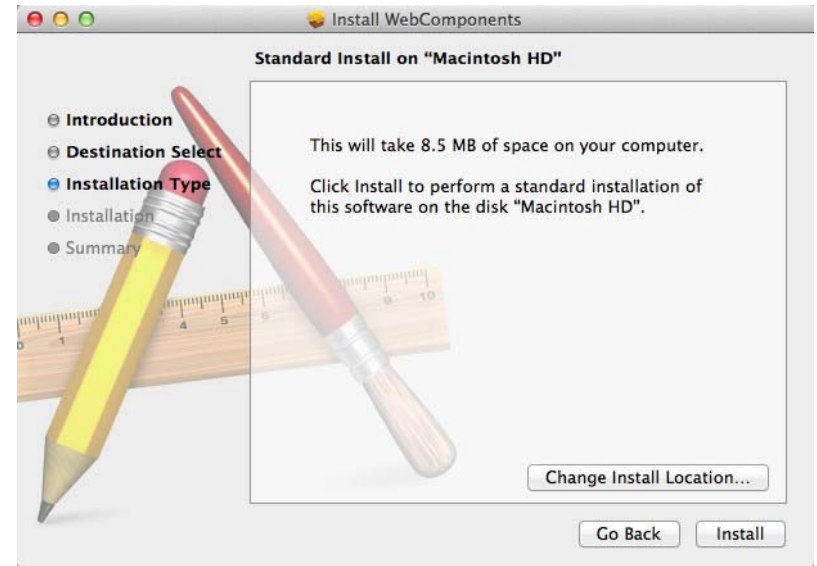
8. Click **Continue** to install the plug-in.



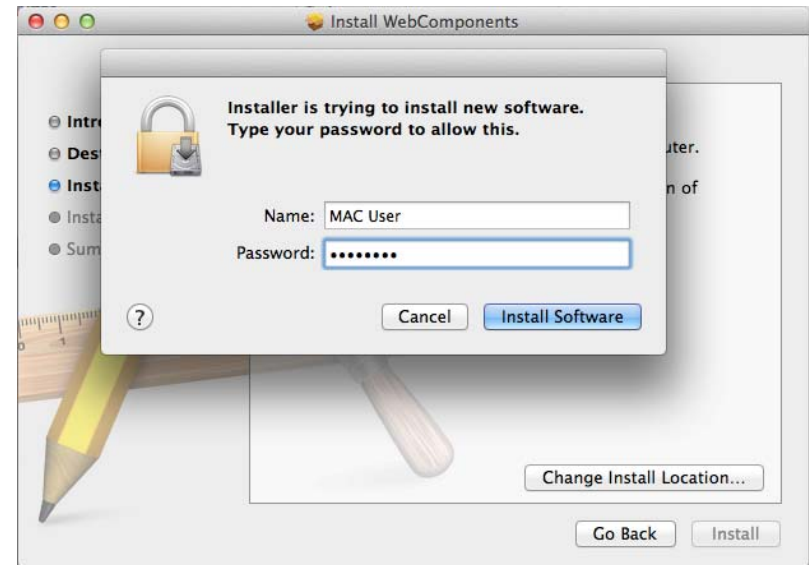
9. Select a destination to install the plug-in. Then click **Continue**.



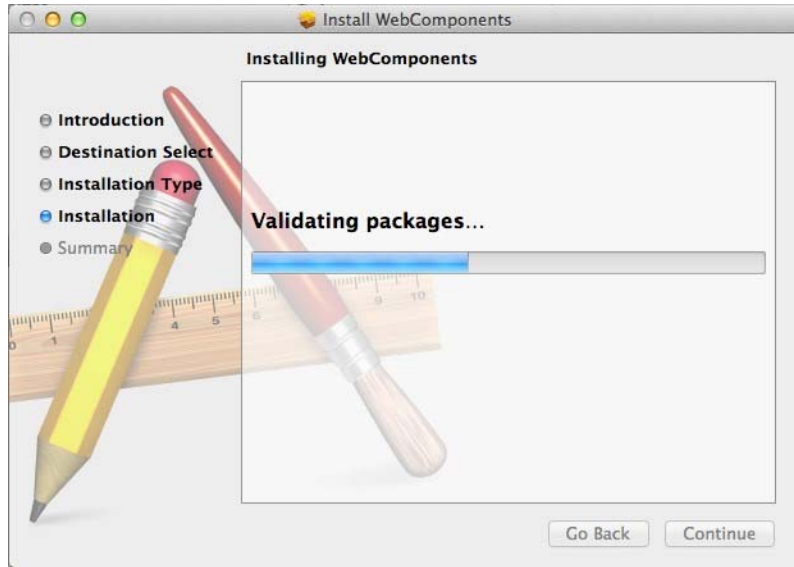
10. Use the default location and click **Install**.



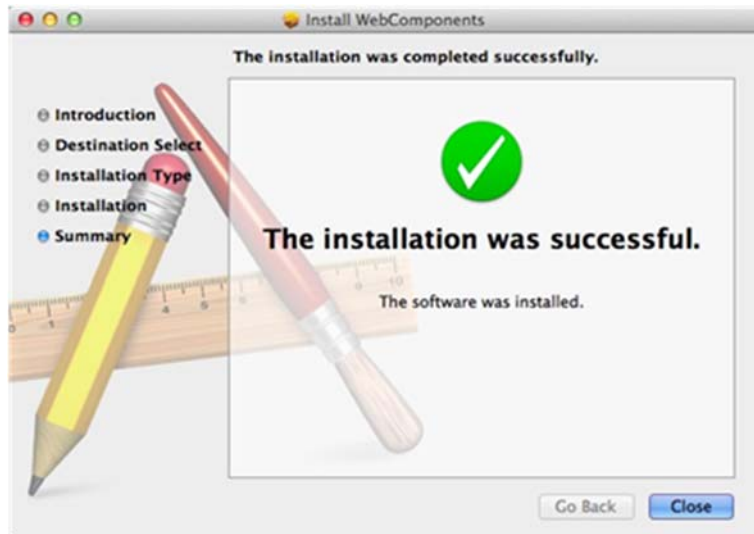
11. Enter your password and click **Install Software**



12. Installation will process automatically.



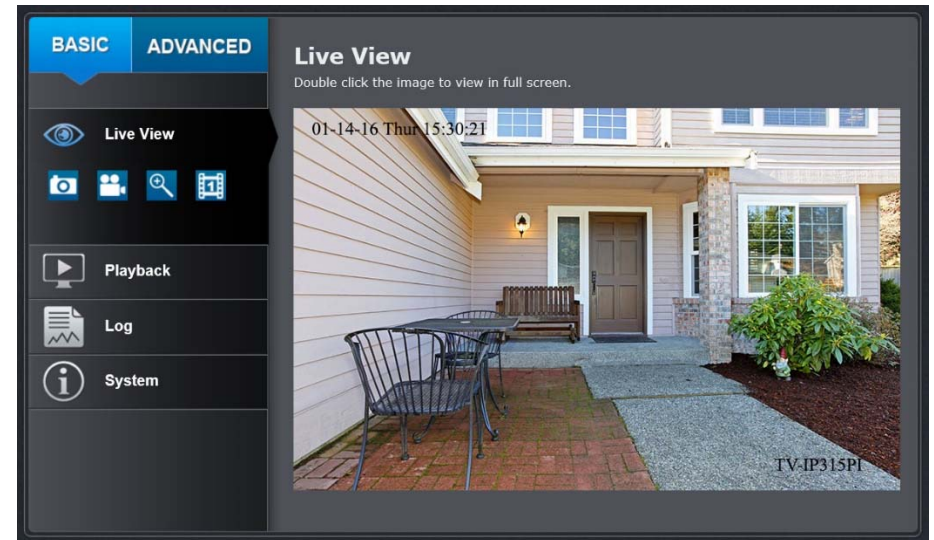
13. Click **Close** to exit the installation.



14. Open the browser and login again with the default IP 192.168.10.30 or the IP that was dynamically assigned by your router. Enter the user name, **admin**, and the default password, **admin**, and then click **OK**.



15. The Live View page shows up and the video starts to stream.



## Live View

After you log-in into the camera management page, you'll see the Live View page.

### Snapshot

Click this icon to take a video snapshot.

### Zoom

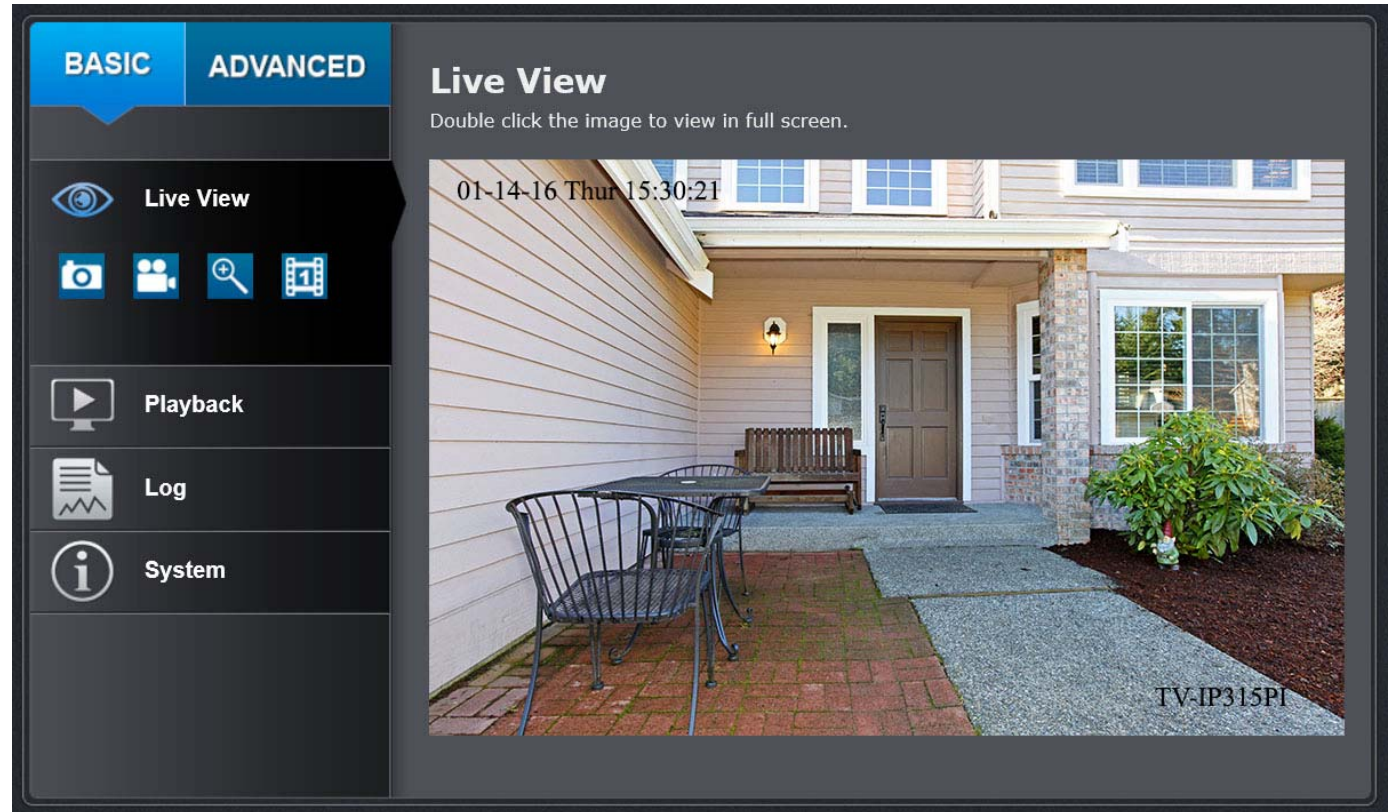
Click once to enable zoom. When enabled, click and drag the area on the picture to zoom in. Right click to resume 100% zoom. Click the icon again to disable zoom. The zoom function works in full screen mode as well.

### Recording

Click once to start recording. Click it again to stop recording. The status bar will indicate if it is in recording state or not.

### Video Stream

Camera has two video streams: H.265, H.264 and MJPEG. Switch to view the different video streams by clicking this icon. (For Internet Explorer and Safari only, Google and Firefox stream Third steam resolution by default)



### Full Screen Mode

Click the picture to view in full screen mode. Double click again or press escape key on your keyboard to exit full screen mode.

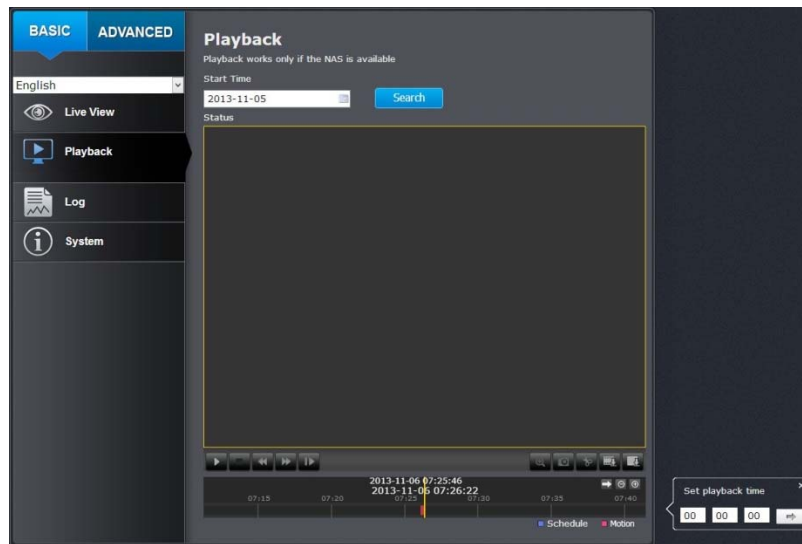
### Status Bar

The status bar shows the status you are at, including enabled the zoom, recording video, and successfully taking a snapshot.



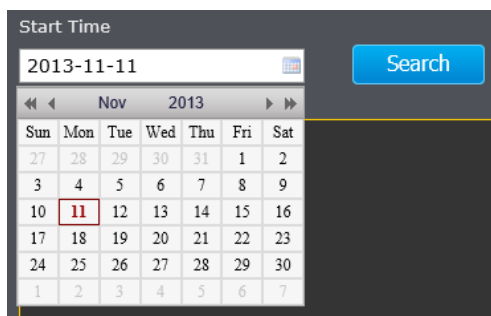
## Playback

You can playback the video recording on the network storage and download the video clip and snapshots to your local computer.






### Search for video recordings

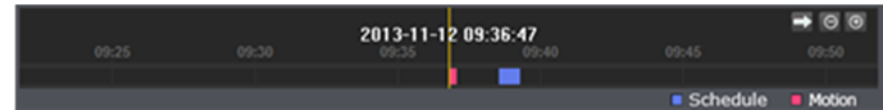
Click the date selection, and then choose a date as the date range of searching. Click **Search** to start searching.



## Time Line

There is a play back head in the center of the time line represented in a yellow vertical line. To look for a specific video recording, move the time line by clicking and dragging it. If the recording is short, zoom in by clicking  button. Click  to zoom out the time scale. If you know the exact time of the day you are looking for, click  then enter the time you want to playback.

Different types of recordings are identified differently. The scheduled recordings are marked in blue, and the recordings triggered by motion detection are marked in red.



Click and drag the time line to move your time manually.



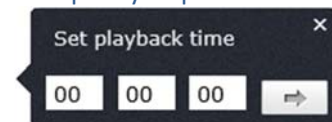
Click this button to zoom in the scale




Click this button to zoom out of the scale



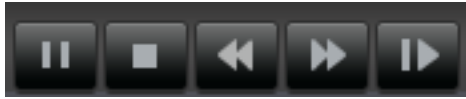
Click this button to specify a specific time of the day.









then click  to confirm selection and then click **X** to close this dialog box.

**Playback**

Use playback controls to play back the video recording.

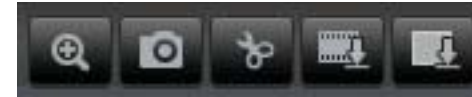



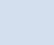
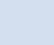
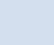

-  Click this button to play the video.
-  Click this button to pause video playback.
-  Click this button to stop playback.
-  Click this button increase playback speed\*.
-  Click this button decrease playback speed\*.
-  Click to playback video frame by frame. Click again for the next frame↓

\* Note: There are 5 steps of playback speed you can choose from: 1/4, 1/2, 1, 2, and 4 times of original speed.

**Slice images from video playback**

You can take snapshots from playback video or make new video clips from the video you are playing back.




-  Click this button to enable zoom. Then click and drag on the video to define the area you want to zoom in. Click again to get back to 100% zoom.  
  
Double click to show video in full screen and press **ESC** on keyboard to exit full screen mode.
-  Click this button to disable zoom.
-  Click this button to take a snapshot of current playback.
-  Click this button to start clipping a video from playback.
-  Click this button to stop clipping a video from playback.

### Download sections of video

To save complete video sections or snapshots, you can download the files directly.



Click  button to download video sections.


| No.                                   | File Name             | Start Time          | End Time            | File Size | Progress   |
|---------------------------------------|-----------------------|---------------------|---------------------|-----------|------------|
| <input checked="" type="checkbox"/> 1 | ch01_0800000000000401 | 2013-11-06 07:26:02 | 2013-11-06 07:26:22 | 2 MB      | Downloaded |
| <input type="checkbox"/> 2            | ch01_0800000000000501 | 2013-11-06 07:37:00 | 2013-11-06 07:37:20 | 1 MB      |            |

[Download](#)

Total 2 Items First Page Prev Page 1/1 Next Page Last Page

Check the time of the recording, select the videos you want to download, and then click **Download**.

### Download snapshots

Click  button to list snapshots to download

| No.                         | File Name              | File Date           | File Size | Progress |
|-----------------------------|------------------------|---------------------|-----------|----------|
| <input type="checkbox"/> 1  | ch00_08000000000301901 | 2013-11-12 09:28:49 | 107 KB    |          |
| <input type="checkbox"/> 2  | ch00_08000000000302001 | 2013-11-12 09:28:50 | 65 KB     |          |
| <input type="checkbox"/> 3  | ch00_08000000000302101 | 2013-11-12 09:28:51 | 57 KB     |          |
| <input type="checkbox"/> 4  | ch00_08000000000302201 | 2013-11-12 09:28:52 | 52 KB     |          |
| <input type="checkbox"/> 5  | ch00_08000000000302301 | 2013-11-12 09:28:53 | 52 KB     |          |
| <input type="checkbox"/> 6  | ch00_08000000000302401 | 2013-11-12 09:28:54 | 53 KB     |          |
| <input type="checkbox"/> 7  | ch00_08000000000302501 | 2013-11-12 09:28:55 | 53 KB     |          |
| <input type="checkbox"/> 8  | ch00_08000000000302601 | 2013-11-12 09:28:56 | 53 KB     |          |
| <input type="checkbox"/> 9  | ch00_08000000000302701 | 2013-11-12 09:28:57 | 53 KB     |          |
| <input type="checkbox"/> 10 | ch00_08000000000302801 | 2013-11-12 09:36:54 | 181 KB    |          |
| <input type="checkbox"/> 11 | ch00_08000000000302901 | 2013-11-12 09:36:55 | 58 KB     |          |
| <input type="checkbox"/> 12 | ch00_08000000000303001 | 2013-11-12 09:36:56 | 54 KB     |          |
| <input type="checkbox"/> 13 | ch00_08000000000303101 | 2013-11-12 09:36:57 | 52 KB     |          |
| <input type="checkbox"/> 14 | ch00_08000000000303201 | 2013-11-12 09:36:58 | 52 KB     |          |
| <input type="checkbox"/> 15 | ch00_08000000000303301 | 2013-11-12 09:36:59 | 52 KB     |          |
| <input type="checkbox"/> 16 | ch00_08000000000303401 | 2013-11-12 09:37:00 | 52 KB     |          |
| <input type="checkbox"/> 17 | ch00_08000000000303501 | 2013-11-12 09:37:01 | 52 KB     |          |
| <input type="checkbox"/> 18 | ch00_08000000000303601 | 2013-11-12 09:37:02 | 52 KB     |          |
| <input type="checkbox"/> 19 | ch00_08000000000303701 | 2013-11-12 09:39:05 | 54 KB     |          |
| <input type="checkbox"/> 20 | ch00_08000000000303801 | 2013-11-12 09:39:06 | 55 KB     |          |
| <input type="checkbox"/> 21 | ch00_08000000000303901 | 2013-11-12 09:39:07 | 52 KB     |          |
| <input type="checkbox"/> 22 | ch00_08000000000304001 | 2013-11-12 09:39:08 | 52 KB     |          |
| <input type="checkbox"/> 23 | ch00_08000000000304101 | 2013-11-12 09:39:09 | 53 KB     |          |
| <input type="checkbox"/> 24 | ch00_08000000000304201 | 2013-11-12 09:39:10 | 53 KB     |          |
| <input type="checkbox"/> 25 | ch00_08000000000304301 | 2013-11-12 09:39:11 | 52 KB     |          |
| <input type="checkbox"/> 26 | ch00_08000000000304401 | 2013-11-12 09:39:12 | 53 KB     |          |
| <input type="checkbox"/> 27 | ch00_08000000000304501 | 2013-11-12 09:39:13 | 53 KB     |          |

Total 27 Items First Page Prev Page 1/1 Next Page Last Page

Motion ▼

Start Time  
2013-11-12 00:00:00

End Time  
2013-11-12 23:59:59

[Search](#)

[Download](#)

#### Schedule

##### Motion

Select the type of event that triggered the snapshots. Choose the Start Time and End Time. Then, click **Search** to find the snapshot list. Check the time of the snapshot, and then select the snapshots you want to download, then click **Download**.

## Log

The log of the TV-IP1315PI will be saved on the network storage. You can search the relevant records and save to your local computer. (See **Network Storage** on page 45 to setup the storage.)

**Search Log**  
Log works only if the NAS is available

Major Type: All Types Minor Type: All Types [Search](#)

Start Time: 2013-10-29 00:00:00 End Time: 2013-10-29 23:59:59 [Save Log](#)

| Sun | Mon | Tue | Wed | Thu | Fri | Sat |
|-----|-----|-----|-----|-----|-----|-----|
| 29  | 30  | 1   | 2   | 3   | 4   | 5   |
| 6   | 7   | 8   | 9   | 10  | 11  | 12  |
| 13  | 14  | 15  | 16  | 17  | 18  | 19  |
| 20  | 21  | 22  | 23  | 24  | 25  | 26  |
| 27  | 28  | 29  | 30  | 31  | 1   | 2   |
| 3   | 4   | 5   | 6   | 7   | 8   | 9   |

Time: 0 : 0 : 0 [Today](#) [OK](#)

Total 0 Items [First Page](#) [Prev Page](#) [Next Page](#) [Last Page](#)

## Search for logs

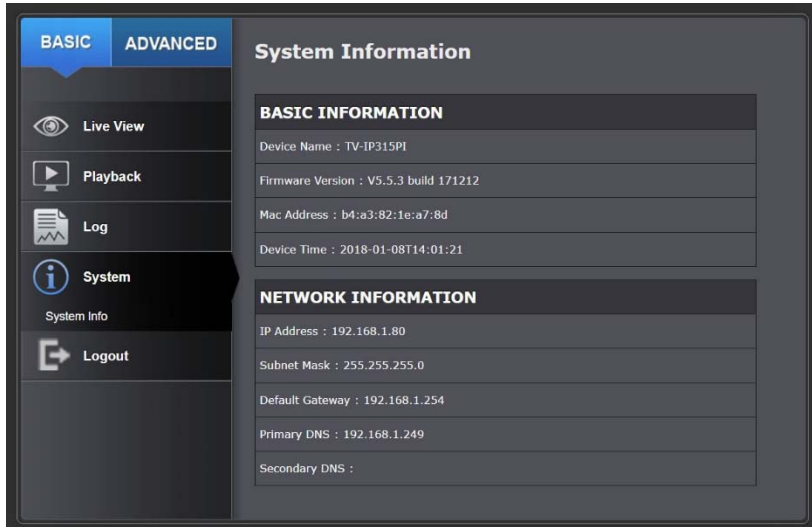
Click the type of log and then the Start Time and End Time. Click **Search** to start searching.

[Total 129 Items](#) [First Page](#) [Prev Page](#) [1/2](#) [Next Page](#) [Last Page](#)

Click **First Page**, **Prev Page**, **Next Page**, and **Last Page** to show the logs. Click **Save Log** to save the logs to your computer.

## System Information

System Information page shows the camera's basic information.



### Basic Information

**Device Name:** Human readable device name for easy identification.

**Firmware Version:** Firmware version

**MAC Address:** The MAC address of Ethernet Interface

**System Time:** The system time setup in the camera. Keeping this time correct is important for recording, scheduled control and logging accurately.

**Device Name:** Human readable device name for easy identification.

### Network Information

**IP Address:** IP address of the TV-IP1315PI

**Subnet Mask:** Network range of IP address

**Default Gateway:** The default route going from the TV-IP1315PI subnet.

**Primary DNS:** Primary DNS server address

**Secondary DNS:** Secondary DNS server address

## System Configuration

### Device Settings

Setup your camera name and location for easy identification. This camera name will also be recognized by other network camera software as the name of this camera. OSD, On Screen Display, camera name is referring to this setting as well.

**Device Settings**  
Setup your camera name and location for easy identification.

**NAME**

Camera Name :

Location :

Add or remove security authentication.

**AUTHENTICATION**

RTSP :

HTTP :

**SERVICE**

Enable SSH :

Enable Illegal Login Lock :

### Names

**Camera Name:** Name of the camera. The camera name setup here can be discovered by other network camera software and OSD, On Screen Display. The default camera name is the model number: TV-IP1315PI

**Location:** Label where you installed this camera for reference

### Authentication

**RTSP:** TV-IP1315PI's video stream can be accessed with RTSP, Real Time Streaming Protocol. Only the administrator and users can view this video stream. Un-checking this box will allow everyone access to this video stream without authentication. Default: Checked.

### Service

**Enable Telnet:** TV-IP1315PI embedded Telnet service for multiple camera control for system developer. Default: disabled.

## User Accounts

You can setup up to 16 user accounts to access the camera's video stream with a web browser or real time video stream (RTSP). Only one administrator account can be setup to configure the TV-IP1315PI and cannot be deleted.



### User Accounts

**Add:** Click **Add** button to add one user account

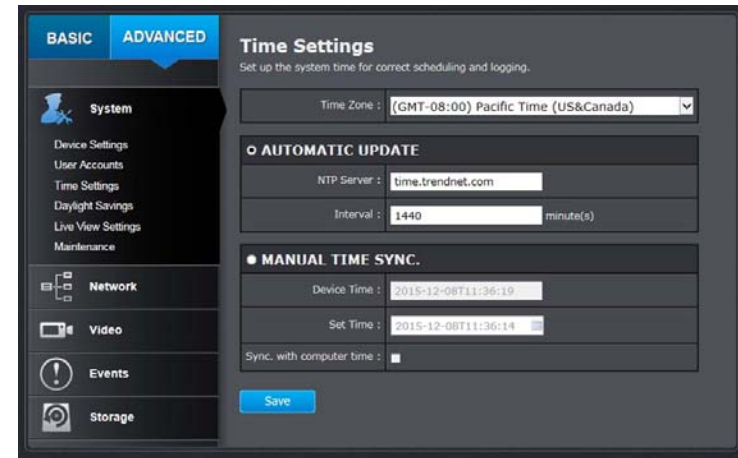
**Modify:** To change a user's name and password, highlight the user by clicking on it. Then, click **Modify** button. You can change the user's name and password. You can also change the administrator's password here. But, the administrator's name is fixed, you cannot change that.

| MODIFY USER   |                           |
|---|---------------------------|
| User Name   | user <input type="text"/> |
| Password  | <input type="password"/>  |
| Confirm   | <input type="password"/>  |
| <input type="button" value="OK"/> <input type="button" value="Cancel"/> |                           |

Click **OK** to save the changes.

## Time Settings

The accuracy of the system clock is important for scheduling and accurate logging. You can synchronize the system time with your computer, or automatically check the time accuracy with a network time server (NTP server).



### Automatic Update

- NTP Server:** Specify a time server (NTP server) to synchronize with. (e.g. pool.ntp.org)
- Interval:** The time interval that the TV-IP1315PI will synchronize the time with NTP server. Default: 1440 minutes (24 hours)

### Manual Time Sync

- Device Time:** The system time of this camera.
- Set Time:** Click the calendar icon and manually select the date. Check the **Sync. with computer time** to copy the time from your computer.

Click **Save** to save the changes

## Daylight Savings

Setup daylight savings.

**Daylight Savings**  
Set daylight savings time.

Enable DST :

Start Time : Mar | Second | Sun | 02 | o'clock

End Time : Nov | First | Sun | 02 | o'clock

DST Bias : 60min

[Save](#)

### Automatic Update

**Enable DST:** Check this box if your time zone has daylight savings.

**Start Time:** Enter the date that daylight savings starts

**End Time:** Enter the date that daylight savings ends

**DST Bias** Enter how much time the daylight saving adjusted by daylight savings.

Click **Save** to save the changes

## Live View Settings

Setup the live view video quality, file size and file saving directories.

**Live View Settings**

**Live View Parameters**

Live View Buffer :  Low  Medium  High

**Record File Settings**

Record File Size :  256M  512M  1G

Save record files to : C:\Camera [Browse](#)

Save downloaded files to : C:\Camera [Browse](#)

**Picture and Clip Settings**

Save snapshots in live view to : C:\Camera [Browse](#)

Save snapshots when playback to : C:\Camera [Browse](#)

Save clips to : C:\Camera [Browse](#)

[Save](#)

### Live View Parameters

**Live View Buffer:** Configure the buffer size for live view video stream. With low buffer size setting, you can get real-time video stream, but the video may be stop and go if the network is congested. With high buffer setting, you can have smooth video streaming, but the video is delayed from the time happening. Medium size can have moderate video stream smoothness and time delay.



### Record File Settings

**Record file size:** This size of live view video recording. You can choose 256MB, 512MB, or 1GB a file. Smaller file size is good for many short recordings.

**Save record files to:** Click **Browse** and then choose a new destination if you want to save the file somewhere else.

**Save downloaded files to:** Click **Browse** and then choose a new destination if you want to save the file somewhere else.

### Picture and Clip Settings

**Save snapshots in live view to:** Click **Browse** and then choose a new destination if you want to save the file somewhere else.

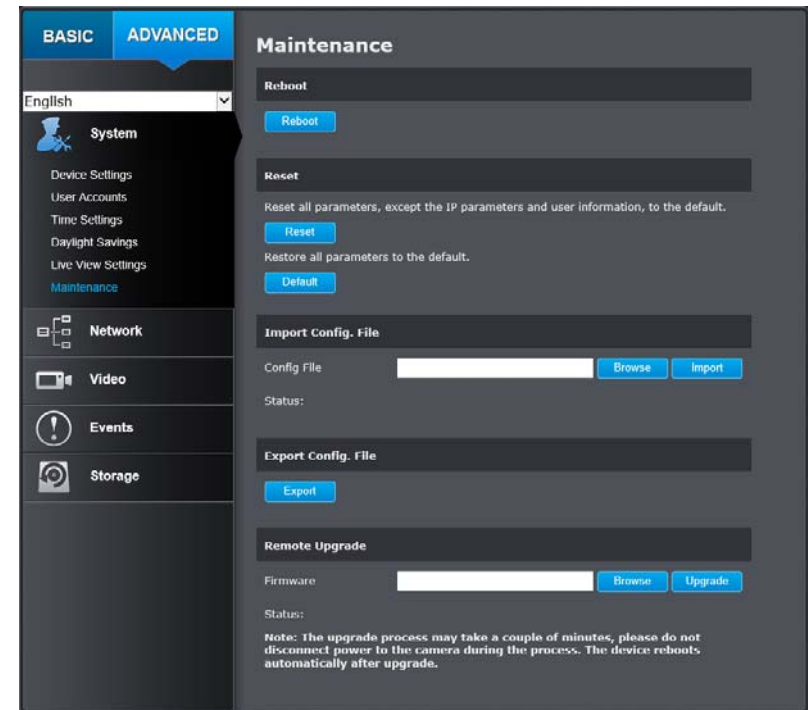
**Save snapshots when playback to:** Click **Browse** and then choose a new destination if you want to save the file somewhere else.

**Save clips to:** Click **Browse** and then choose a new destination if you want to save the file somewhere else.

Click **Save** to save the changes

## Maintenance

You can restart, load camera settings and upgrade the camera firmware on this page.



### Reboot

**Reboot:** Click this button to reboot this camera.

### Reset

**Reset:** Reset all camera parameters, except the IP parameters and user information.

**Default:** Load complete factory default to the camera.

**Inport Config. File**

**Config File:** To load previously saved settings, click **Browse** to find the configuration file and then click **Import**.

**Status:** Shows the status in loading configuration file.

**Export Config. File**

**Export:** Click Export to download configuration file. The file will be downloaded to the Download folder by default.

**Remote Upgrade**

**Firmware:** Click Browse to find the latest firmware and then click Upgrade.

**Status:** Shows the status in firmware upgrade.

TRENDnet may periodically release firmware upgrades that might add features or fix problems associated with your camera. To find out if there is a firmware upgrade available for your device, please check your TRENDnet model and version using the link.

<http://www.trendnet.com/downloads/>

1. If a firmware upgrade is available, download the firmware to your computer.
2. Unzip the file to a folder on your computer.
3. Read the firmware upgrade instruction for specific version update information.
4. Log into the TV-IP1315PI.
5. Getting to this Maintenance page to upgrade firmware.

## Network Settings

### TCP/IP

Setup your basic IPv4 and IPv6 network settings on this page.

| NETWORK INTERFACE          |  |
|----------------------------|--|
| Mac Address                | b4:a3:82:1e:a7:8d                      |
| Duplex and Speed           | Auto                                   |
| MTU                        | 1500                                   |
| Multicast Address          |  |
| Enable Multicast Discovery | <input checked="" type="checkbox"/>    |
| Preferred DNS Server       | 192.168.1.249                          |
| Alternate DNS Server       |  |
| IPV4                       |  |
| DHCP                       | <input checked="" type="checkbox"/>    |
| IPv4 Address               | 192.168.1.74 <span>Test</span>         |
| IPv4 Subnet Mask           | 255.255.255.0                          |
| IPv4 Default Gateway       | 192.168.1.254                          |
| IPV6                       |  |
| IPv6 Mode                  | Route Advertisement <span>Route</span> |
| IPv6 Address               |  |
| IPv6 Subnet Mask           |  |
| IPv6 Default Gateway       | ::                                     |
| <span>Save</span>          |  |

### Network Interface

**MAC Address:** Click this button to reboot this camera.

**Duplex and Speed:** Choose one of the Ethernet duplex and speed to match your network. Default: auto.

**MTU:** Maximum transmission unit. The maximum field size in the Ethernet packet.

**Multicast:** Sends a stream to the multicast group address and allows multiple clients to acquire the stream at the same time by requesting a copy from the multicast group address. Multicast function needs to be enabled on your router before utilizing the feature on the camera.

**Primary DNS:** Enter your first IPv4 or IPv6 DNS server address

**Secondary DNS:** Enter your second IPv4 or IPv6 DNS server address

#### IPv4

**DHCP:** Check this box if the IP address is assigned by DHCP server.

**IPv4 Address:** The IPv4 dynamic or static address

**Subnet Mask:** Network range of the subnet

**Default Gateway:** The default route going further from TV-IP1315PI IPv4 subnet

#### IPv6

**IPv6 Mode:** Choose Manual, DHCP, or Route Advertisement. Click View Route Advertisement to find a route advertisement.

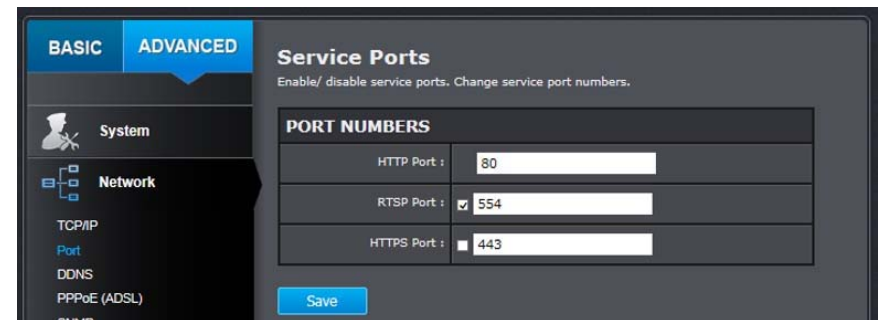
**IPv6 Address:** IPv6 address of TV-IP1315PI

**Prefix Length:** Length of network prefix

**Default Gateway:** The default route going further from TV-IP1315PI IPv6 subnet

## Port

You can change the service port numbers of TV-IP1315PI and enable/disable RTSP or HTTPS services.



### Port Numbers

**HTTP Port:** The default web access port. You can change the port number. However, you cannot disable the web service. The default port number is 80.

**RTSP Port:** The Real-Time Streaming Protocol port for video streaming. You can change the port number or disable the service by uncheck the box. The default port number is 554.

**HTTPS Port:** The secured web service port. You can change the port number, or you can disable the service by uncheck the box. The default port number is 443.

Click **Save** to save the changes

## DDNS

Dynamic Domain Name Service, DDNS, allows you to find your camera from the Internet with an easy to remember domain name.

**BASIC** **ADVANCED**

English

**System**

**Network**

TCP/IP

Port

DDNS

PPPoE (ADSL)

SNMP

802.1x

IP Address Filter

QoS

UPnP

**Dynamic Domain Name Service (DDNS)**  
Easier locate your camera by setting up dynamic domain name service.

Enable DDNS :

DDNS Type : NO-IP

Server Address :

Domain :

User Name :

Password :

Confirm :

**Save**

### DDNS

**Enable DDNS:** Check this box to enable DDNS Service.

**DDNS Type:** Select a DDNS service provider.

NO-IP

IPServer

DynDNS

NO-IP

HiDDNS

**Server Address:** Enter the DDNS server address.

**Domain:** Enter your registered domain/host name on selected DDNS service.

**User Name:** Enter the account name.

**Password:** Enter the password.

**Confirm:** Enter the password again.

Click **Save** to save the changes

## PPPoE

Setup PPPoE (ADSL) connection to connect your camera with your ISP, Internet Service Provider.

**BASIC** **ADVANCED**

English

**System**

**Network**

TCP/IP

Port

DDNS

PPPoE (ADSL)

SNMP

802.1x

IP Address Filter

QoS

UPnP

**PPPoE (ADSL)**  
Connect to the Internet with PPPoE.

Enable PPPoE :

Dynamic IP : 0.0.0.0

User Name :

Password :

Confirm :

**Save**

### PPPoE (ADSL)

**Enable PPPoE:** Check this box to enable PPPoE connection.

**Dynamic IP:** The IP address assigned by ISP

**User Name:** Enter the account name.

**Password:** Enter the password.

**Confirm:** Enter the password again.

Click **Save** to save the changes

**\*Note:** To view the camera remotely, please make sure the HTTP and RTSP ports are opened (port forwarded) on your network/router.

## SNMP

SNMP Settings allows you to assign the contact details, location, community name and trap settings of SNMP. This is a networking management protocol used to monitor network-attached devices. SNMP allows messages (called protocol data units) to be sent to various parts of a network. Upon receiving these messages, SNMP compatible devices (called agents) return data stored in their Management Information Bases.

### SNMP V1/V2

- Enable SNMPv1:** Check this box to enable SNMP v1 management.
- Enable SNMPv2c:** Check this box to enable SNMP v2c management.
- Read SNMP Community:** Specify the password to access the SNMP community for read only access.
- Write SNMP Community:** Specify the password for access to the SNMP community with read/write access.
- Trap Address:** Specify the IP address for the SNMP trap community.
- Trap Port:** Specify the port number for the SNMP trap community.
- Trap Community:** Specify the name of SNMP trap community.

### SNMP V3

- Enable SNMPv3:** Check this box to enable SNMP v3 management.
- Read User Name:** SNMP v3 member user name.
- Security Level:** Choose one of the security levels.
  - Authentication and Privacy
  - Authentication only
  - Privacy only

- Authentication Algorithm:** Choose the authentication method to verify the source of information: MD5 or SHA.
- Authentication Password:** Specify the authentication password between 8 to 32 letters.
- Private-key Algorithm:** Choose the privacy key to encrypt SNMP messages: DES or AES.
- Private-key Password:** Specify the privacy key between 8 to 32 letters.
- Write User Name:** SNMP v3 manager user name.
- Security Level:** Choose one of the security levels.

Authentication and Privacy  
 Authentication only  
 Privacy only

**Authentication Algorithm:** Choose the authentication method to verify the source of information: MD5 or SHA.

**Authentication Password:** Specify the authentication password between 8 to 32 letters.

**Private-key Algorithm:** Choose the privacy key to encrypt SNMP messages: DES or AES.

**Private-key Password:** Specify the privacy key between 8 to 32 letters.

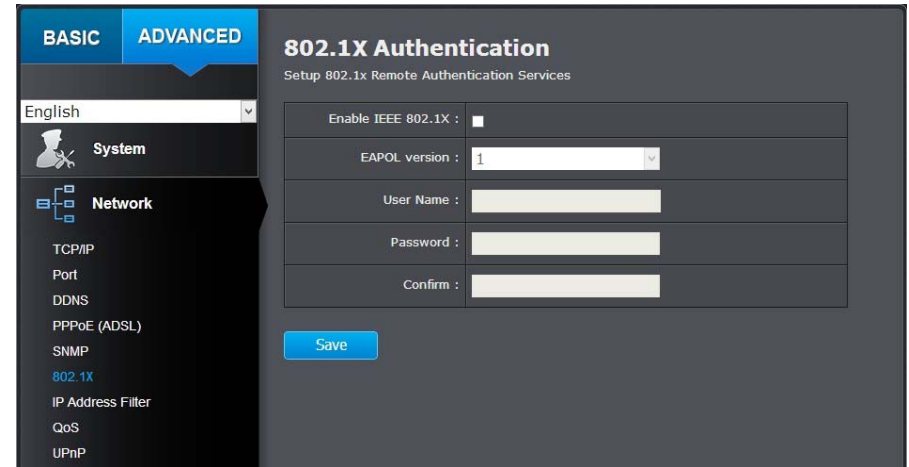
**SNMP Other Settings**

**SNMP Port:** SNMP service port number.

Click **Save** to save the changes

**802.1X**

Setup 802.1X for remote authentication service.



**802.1X Authentication**

**Enable IEEE 802.1X:** Check this box to enable 802.1X authentication service.

**EAPOL version:** Extensible Authentication Protocol (EAP) over LAN (EAPoL). Choose version 1 or 2. This version number has to match to your 802.1X service EAPOL version.

**User Name:** Enter the account name.

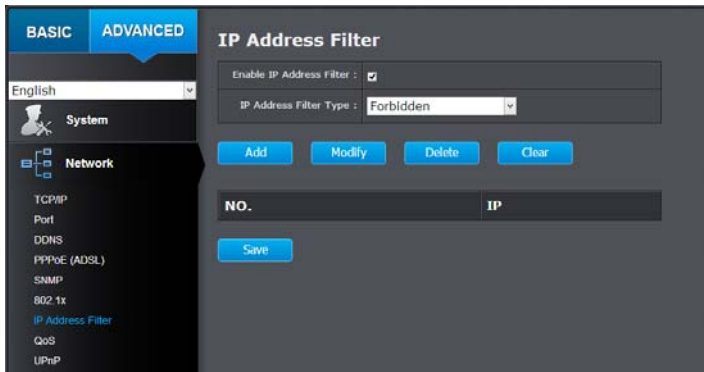
**Password:** Enter the password.

**Confirm:** Enter the password again.

Click **Save** to save the changes

## IP Address Filter

Set up a list of clients allow only the clients on the list to access this camera or to reject clients on the list from access this camera.



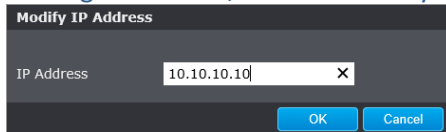
### IP Address Filter

**Enable IP Address Filter:** Check this box to enable IP address filtering service.

**IP Address Filter Type:** Choose Forbidden to ban the listed IP addresses or Allowed to allow listed host to access this camera.

**Add:** Click Add to add a user account

**Modify:** To modify an entry on the list, highlight the entry by clicking on it. Then, click the Modify button.



Enter the IP address then click OK

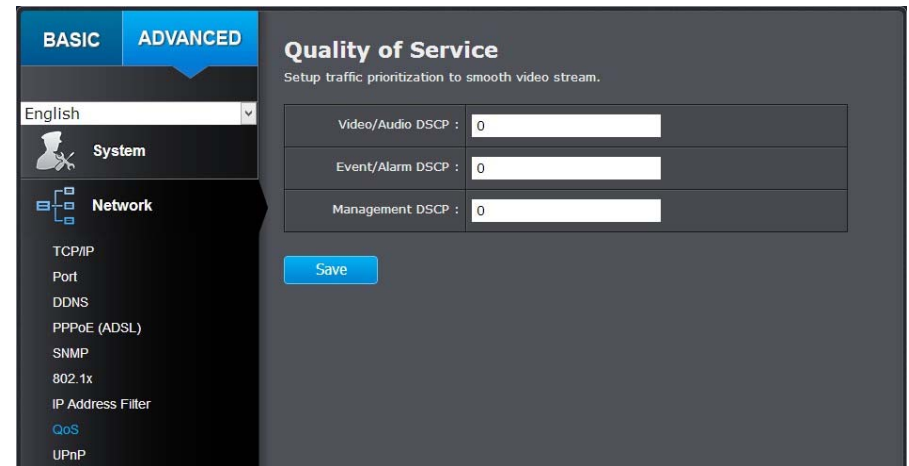
**Delete:** To delete an entry on the list, highlight the entry by clicking on it. Then, click Delete

**Clear:** To clear all entries, click Clear

Click **Save** to save the changes

## Quality of Service (QoS)

Setup traffic prioritization tags the video packets to go through network switches and routers with assigned priority. You can set the Differentiated Services Code Point (DSCP) bits on outgoing data streams. The QoS capable network device will forward different data in different priorities. The meaning of the value is different in different DiffServ domains. Consult your network manager for the setup details.



### IP Address Filter

**Video/Audio DSCP:** Enter Video/Audio DSCP. Default: 0.

**Event/Alarm DSCP:** Enter Event/Alarm DSCP. Default: 0.

**Management DSCP:** Enter Management DSCP. Default: 0.

Click **Save** to save the changes

## UPnP

Universal Plug-and-Play is a device discovery protocol set. It allows your camera to easily be found, for example, on a Windows operation system.

### UPnP

**Enable UPnP:** Check this box to enable UPnP connection.

**Friendly Name:** The name that will be appeared when searched.

### Port Mapping

**Enable Port Mapping:** Check this box to enable UPnP connection.

**Port Mapping Mode:** Choose **Manual** or **Auto** port mapping.

**External Port:** Choose the port number for mapping.

Click **Save** to save the changes

## Video Settings

### Video Format

| Stream Type         | Settings  |
|---------------------|---|
| Main Stream(Normal) | Video Encoding: H.264<br>H.264+: OFF<br>Resolution: 2688*1520<br>Bitrate Type: Variable<br>Video Quality: Medium<br>Frame Rate: 20 frames per second<br>Max. Bitrate: 6144 kbps<br>I Frame Interval: 60 |
| Sub Stream          | Video Encoding: MJPEG<br>Resolution: 640*360<br>Bitrate Type: Variable<br>Video Quality: Medium<br>Frame Rate: 20 frames per second<br>Max. Bitrate: 1024 kbps<br>I Frame Interval: 60                  |

**Video Encoding:** Choose the video stream you want to modify. H.264 and H.265 videos are always streaming and can be configured separately.

**H.264+ / H.265+** Higher compression option



| Resolution:             | H.264/H.265  | MJPEG              |
|-------------------------|--|--------------------|
|                         | 1280*720P<br>1920*1080P<br>2560*1440<br>2944*1656  | 352*288<br>640*360 |
| <b>Bitrate Type:</b>    | Choose between variable bit rate or constant bit rate for video compression. The default is variable rate.   |                    |
| <b>Video Quality:</b>   | Choose the video quality. The default is medium quality.   |                    |
| <b>Frame Rate:</b>      | Choose the capturing frame rate. The default value is 30 frames per second. Reduce the frame rate to reduce the capture file size.   |                    |
| <b>Max. Bitrate:</b>    | Choose the maximum video sampling bit rate. Default: 2048  |                    |
| <b>I Frame Interval</b> | An I Frame is a frame that records a complete picture. Frames between I frames, (P frame or B frame) only records the image differences between two frames. Choose the I Frame Interval here. The default is 60. |                    |

Click **Save** to save the changes

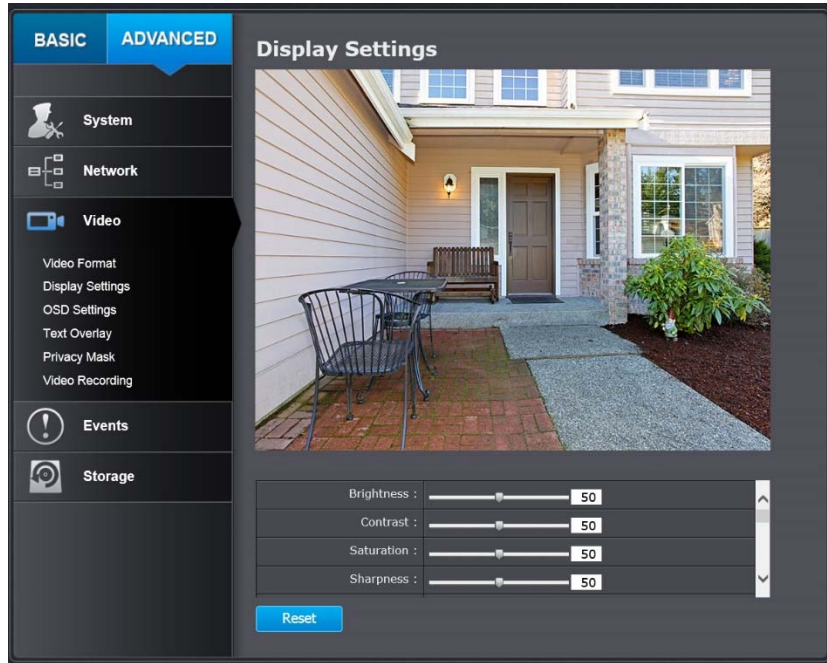
Sub stream can be used for lower resolution needed application, for example mobile app streaming or NVR streaming.

Third stream is used for Live view only, it has resolution limitation on Chrome, Firefox and Safari. Max resolution can be supported under Internet Explorer.

**Note: When H.264+/H.265+ is enabled, Live view on Chrome or Firefox will be disabled due to browser limitation, you can continue to use Internet Explorer or Safari to view the camera otherwise disable the H.264+ and H.265+ option.**

## Display Settings

Adjust video image quality, lightness, and color settings here.



**Brightness:** Use the slider or enter a number (0-100) to adjust the image brightness. Default: 50

**Contrast:** Use the slider or enter a number (0-100) to adjust the image contrast. Default: 50

**Saturation:** Use the slider or enter a number (0-100) to adjust the color saturation. The greater number means the color will be more saturated. Default: 50

**Sharpness:** Use the slider or enter a number (0-100) to adjust the image sharpness. Default: 50



**Light sensitivities**

**Smart IR:** Smart IR can adjust the strength of infrared lights at night depending on the distance of an object to maintain the maximum IR light distance and while maintaining a clear picture when object is close by. Default: On.

**Max. Exposure Time:** Adjust this value for exposure time for each picture. You can choose a value between 1/3 second to 1/100,000 second. The default value is 1/30 second exposure time for each picture.

- 1/3
- 1/6
- 1/12
- 1/30
- 1/60
- 1/120
- 1/250
- 1/500
- 1/750
- 1/1000
- 1/2000
- 1/4000
- 1/10000
- 1/100000

**Video Standard:** This is the base frequency for the video refresh rate. It is recommended to set to the same frequency of your local video standard (NTSC: 60, PAL: 50). Default: 60Hz.

**Day/Night Switch:** Choose whether you want the camera to be set to the day mode (color video) or night mode (IR enhanced black/white video). You can manually set it to day mode or night mode, adjust by lighting (Auto), or pre-define schedule.

- Day
- Night
- Auto
- Schedule

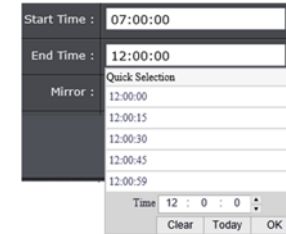
**Auto:**

**Sensitivity:** The light sensor sensitivity.

**Switch Time:** The time delayed to switch between modes. Longer switch time can prevent unnecessary mode flipping if an object is blocking the light source temporarily. Range: 5-120 seconds, default: 5 seconds.

**Schedule:**

Use quick selection or enter the time down below. Click **OK** to confirm the time you want to set.



**Start Time:** The start time for day mode.

**Stop Time:** The start time for day mode.

**Position adjustments**

**Mirror:** Horizontal  
Vertical  
Horizontal/Vertical  
Default

Choose horizontal, vertical or both to adapt to the physical position of installation.

**Image adjustments**

**Back Light Compensation and Wide-Dynamic-Range:** **Back light compensation:** Setup a fixed light source position to compensate and adjust the image in the dark.  
 Choose the area that you want to enhance (dark area, not light source).  
*Note: By default, the WDR is disabled. Please enable WDR to set up back light compensation.*

|                     |          |
|---------------------|----------|
| WDR :               | Disabled |
| Backlight Control : | Close    |

**WDR:** Wide Dynamic Range compensates for the dark area dynamically.

- WDR Level:** The level of compensation. Range: 0-100%, default: 20%.

**White Balance:** Choose a color temperature as the white color and compensate the color on the whole image.

|  |
|--|
| Automatic<br>Locked<br>Incandescent Lamp(3000K)<br>Warm Light Lamp(4000K)<br>Natural Light(5500K)<br>Fluorescent Lamp(6500K) |
|--|

**Digital Noise Reduction:** Choose the mode of noise reduction.

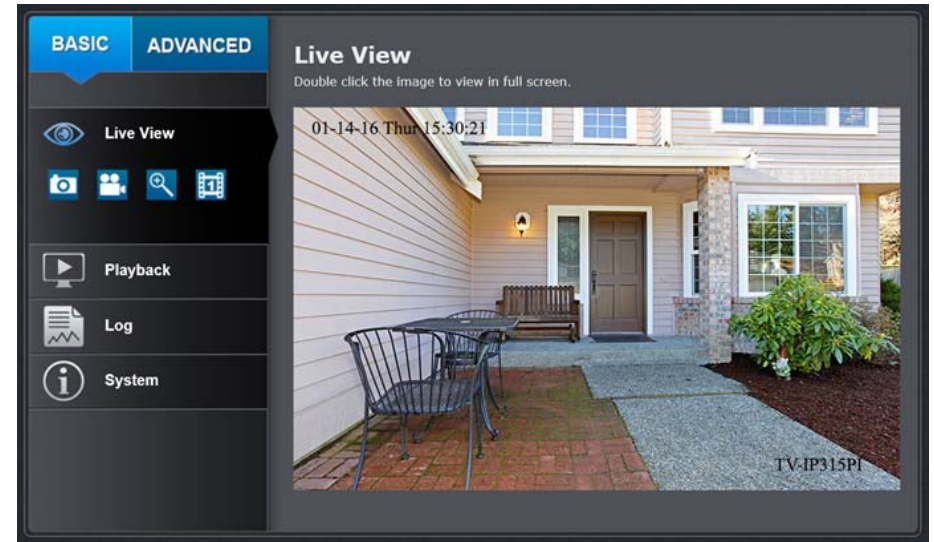
**Normal Mode**  
**Noise Reduction Level:** Adjust the effect of digital noise reduction. Range: 0-100%, default : 100%

**Expert Mode**  
**Space DNR Level:** Adjust the special digital noise reduction with adjacent pixels. Change the range (0-100%) to change the adjacency effect, default : 50%  
**Time DNR Level:** Adjust the 3D digital noise reduction. Compare and reduce noise between video frames. Range: 0-100%, default : 100%

Click **Reset** to reset the display adjustments

**On Screen Display Settings**

Display the camera name and the time the video is shooting on the screen

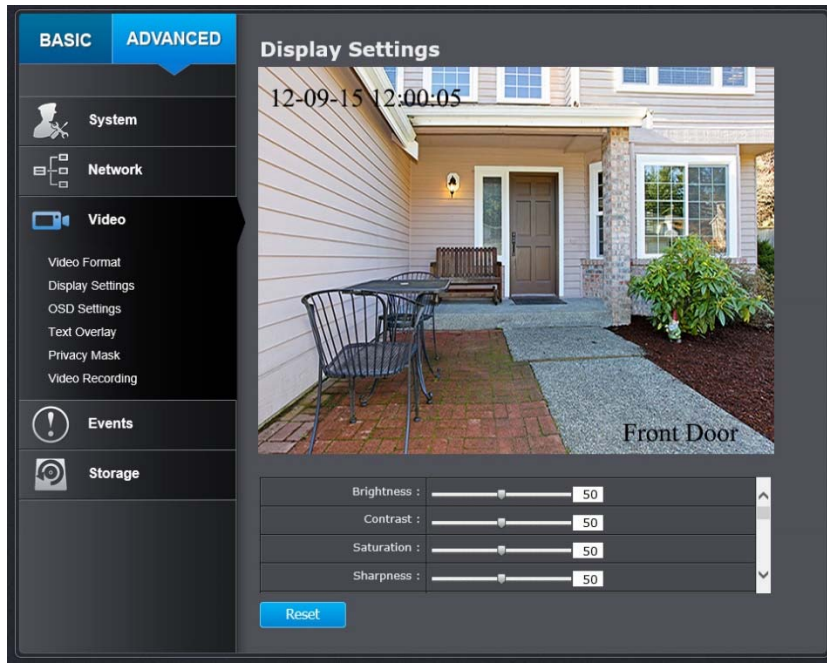


- Display Name:** Check this box to display the product name that was setup in the device settings
- Display Date:** Check this box to display system time.
- Display Week:** Check this box to display time of the week.
- Time Format:** Select 12 or 24-hour time format.
- Date Format:** Select the date format
- Display Mode:** Choose how the text will show on the screen.
- OSD Size:** Select the text size from 16 to 64 or adjusted by screen size automatically.

Move the red box to position the text. Click **Save** to save the changes.

## Text Overlay

Display extra information on the screen over the image.



**Check Box:** Check this box to enable text overlay.

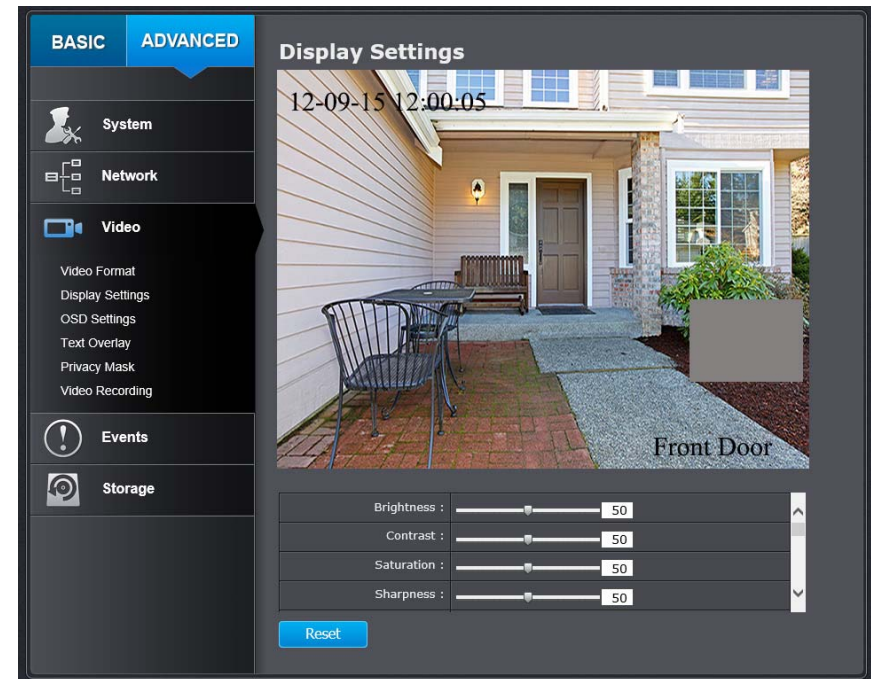
**Text Field:** Enter the text you want to display. You can enter your local language if you want. The text field allows maximum 44 English letters or 20 non-English characters.

*Move the red box to position the text.*

*Click **Save** to save the changes*

## Privacy Mask

Create a masking area to keep your privacy. You can create up to four independent masking areas by clicking and dragging on the screen.



**Enable Privacy Mask:** Check this box to enable privacy masking.

**Stop Drawing:** Click this button to stop drawing.

**Clear All:** Click this button to clear all the masking areas.

*Click **Save** to save the changes*

## Video Recording

**Pre-record:** Recording time before trigger event.

**Post-record:** Recording time after trigger event.

**Overwrite:** Select Yes to allow older recordings to be overwritten.

**Enable Record Schedule:** Check this box and then click Save to enable video recording.

Click **Save** to save the changes

**Edit:** Click **Edit** to edit the recording schedule. The Edit Schedule window will pop up.

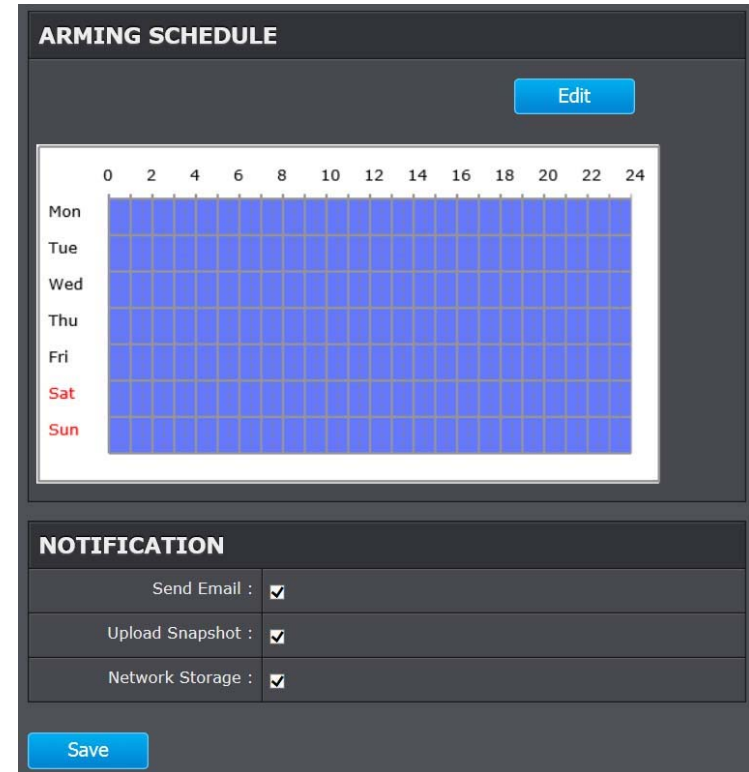
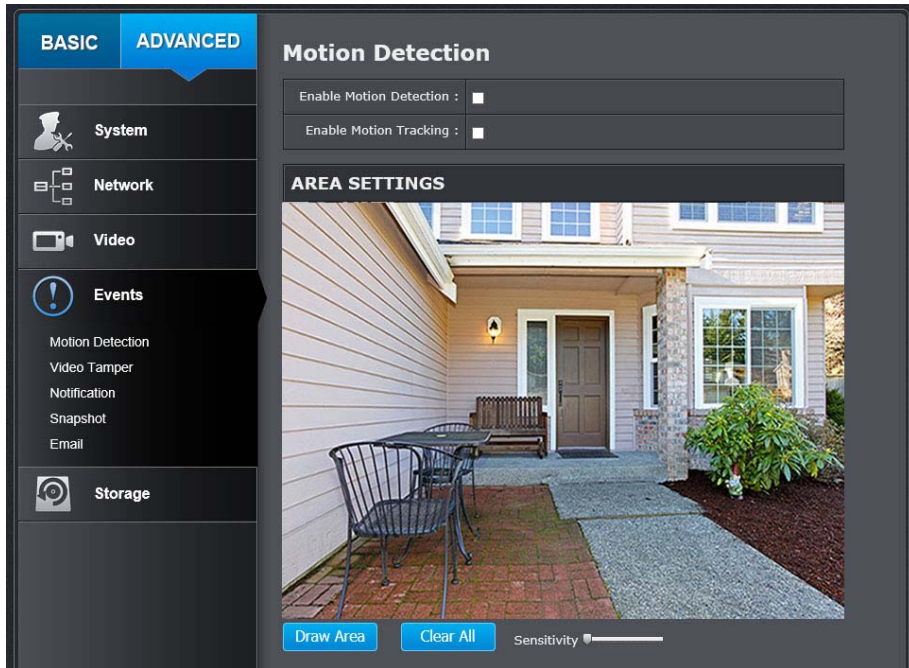
| Period | Start Time | End Time | Record Type |
|--------|------------|----------|-------------|
| 1      | 00:00      | 00:00    | Continuous  |
| 2      | 00:00      | 00:00    | Continuous  |
| 3      | 00:00      | 00:00    | Continuous  |
| 4      | 00:00      | 00:00    | Continuous  |
| 5      | 00:00      | 00:00    | Continuous  |
| 6      | 00:00      | 00:00    | Continuous  |
| 7      | 00:00      | 00:00    | Continuous  |
| 8      | 00:00      | 00:00    | Continuous  |

1. Select day of the week you want to edit.
2. Select **All Day** or **Customized** schedule of the day.
3. Set the time period and the event you want to trigger the video recording **continuous** (always recording) or **motion detection**.
4. Click **Select All** or the weekday you want to have the same schedule on different day.
5. Click another day of the week by clicking on its tab to set the next schedule. Click **OK** when you have finished your settings.

## Events

### Motion Detection

Set up how the motion detection event will be triggered and what actions will be triggered.



**Enable Motion Detection:** Check this box to enable motion detection. Click **Save** to save the choice.

**Enable Motion Tracking:** Check this box to enable motion tracking. Motion tracking is a dynamic display that shows the current status of motion detection. The motion tracking is displayed with grids in green. The grid area represents the camera motion is happening. Click **Save** to save the choices.

**Draw Area:** Click **Draw Area** button to start drawing. Click and drag on the area you want to set up the motion detection. You can draw up to 8 different areas. Click **Stop Drawing** to stop drawing motion detection areas.  
The red grids represent the motion detection area.

**Sensitivity:** Move the slider to adjust detection sensitivity.

**Clear All:** Click this button to clear all the set up areas.

### Arming Schedule

**Edit:** Click **Edit** to edit the recording schedule. The Edit Schedule window will pop up.

| Period | Start Time | End Time | Record Type |
|--------|------------|----------|-------------|
| 1      | 00: 00     | 00: 00   | Continuous  |
| 2      | 00: 00     | 00: 00   | Continuous  |
| 3      | 00: 00     | 00: 00   | Continuous  |
| 4      | 00: 00     | 00: 00   | Continuous  |
| 5      | 00: 00     | 00: 00   | Continuous  |
| 6      | 00: 00     | 00: 00   | Continuous  |
| 7      | 00: 00     | 00: 00   | Continuous  |
| 8      | 00: 00     | 00: 00   | Continuous  |

1. Select day of the week you want to edit.
2. Select **All Day** or **Customized** schedule of the day.

3. Set the time period and the event you want to trigger the video recording **continuous** (always recording) or **motion detection**.
4. Click **Select All** or the weekday you want to have the same schedule on different day.
5. Click another day of the week by clicking on its tab to set the next schedule. Click **OK** when you have finished your settings.

### Notification

**Send Email:** Check this box to send an e-mail notification when motion is detected.

**Network Storage:** Check this box to record video to network storage when motion is detected.

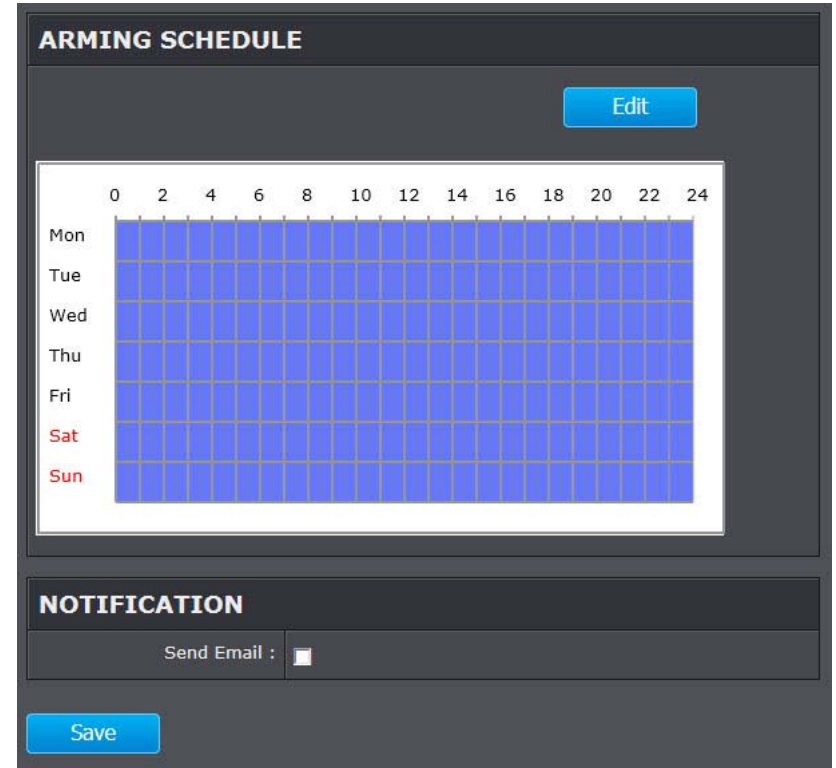
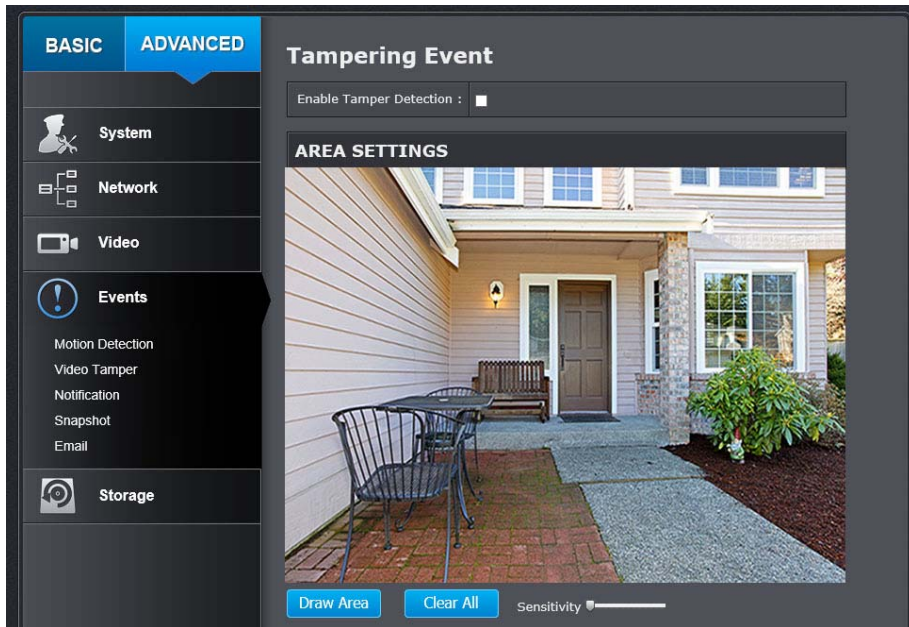
**Upload to FTP:** Check this box to send snapshots to an FTP server when motion is detected.

Click **Save** to save the changes



## Video Tampering

This is to detect if the camera has been tampered with and surveillance is compromised. You can set up tamper proof notifications to alert the system manager to check the camera.



- Enable Tamper Detection:** Check this box to enable tamper detection. Click **Save** to save the settings.
- Draw Area:** Click **Draw Area** button to start drawing. Click and drag on the area you want to set up the tamper detection. You can setup only one area for tamper detection. Click **Stop Drawing** to stop drawing motion detection areas. The gray block represents the detection area.
- Sensitivity:** Move the slider to adjust detection sensitivity.
- Clear All:** Click this button to clear all the set up areas.

## Arming Schedule

**Edit:** Click **Edit** to edit the recording schedule. The Edit Schedule window will pop up.

| Period | Start Time | End Time | Record Type |
|--------|------------|----------|-------------|
| 1      | 00:00      | 00:00    | Continuous  |
| 2      | 00:00      | 00:00    | Continuous  |
| 3      | 00:00      | 00:00    | Continuous  |
| 4      | 00:00      | 00:00    | Continuous  |
| 5      | 00:00      | 00:00    | Continuous  |
| 6      | 00:00      | 00:00    | Continuous  |
| 7      | 00:00      | 00:00    | Continuous  |
| 8      | 00:00      | 00:00    | Continuous  |

1. Select day of the week you want to edit.
2. Select **All Day** or **Customized** schedule of the day.
3. Set the time period and the event you want to trigger the video recording **continuous** (always recording) or **motion detection**.
4. Click **Select All** or the weekday you want to have the same schedule on different day.
5. Click another day of the week by clicking on its tab to set the next schedule. Click **OK** when you have finished your settings.

## Notification

**Send Email:** Check this box to send an e-mail notification when motion is detected.

Click **Save** to save the changes

## Notification

Provide notifications for other system events, set up your notifications here.

## Notification

**Notification Type:** First, choose the exception type, and then choose the corresponding action.

**Send Email:** Check this box to send an e-mail notification when motion is detected.

Click **Save** to save the changes

## Snapshot

You can set up your camera to continuously taking snapshots or taking snapshots only when events happening.

The screenshot shows the 'Snapshot' configuration page in the Trendnet web interface. The left sidebar has tabs for 'BASIC' and 'ADVANCED', with 'ADVANCED' selected. Under 'ADVANCED', there are sections for 'System', 'Network', 'Video', 'Events', and 'Storage'. The 'Events' section is expanded, showing 'Motion Detection', 'Video Tamper', 'Notification', 'Snapshot', and 'Email'. The 'Snapshot' configuration is shown in two modes: 'CONTINUOUS' and 'EVENT-TRIGGERED'. In the 'CONTINUOUS' mode, 'Enable' is checked, 'Format' is JPEG, 'Resolution' is 2688\*1520, 'Quality' is High, and 'Interval' is 10 seconds. In the 'EVENT-TRIGGERED' mode, 'Enable' is unchecked, 'Format' is JPEG, 'Resolution' is 2688\*1520, 'Quality' is High, 'Interval' is 0 milliseconds, and 'Capture Number' is 6. A 'Save' button is located at the bottom of the configuration area.

### Continuous

**Enable:** Check this box to take snapshots continuously.

**Format:** Save snapshots in JPEG format

**Resolution:** Uses the same resolution set in Video Format for the snapshot resolution.

**Quality:** Choose a compression quality for snapshots.

**Interval:** State the time interval between snapshots. The default interval is 10 seconds.

### Event triggered

**Enable:** Check this box to take snapshots when an event is occurred.

**Format:** Save snapshots in JPEG format

**Resolution:** Uses the same resolution set in Video Format for the snapshot resolution.

**Quality:** Choose a compression quality for snapshot.

**Interval:** State the time interval between this series of snapshots. The default interval is 1 second.

**Capture Number:** State how many snapshots you want to take in a single triggered event. Default: 3 pictures.

*Click **Save** to save the changes*

## Email

Set up email accounts for notifications.

### Sender

**Sender:** Enter the name to be appeared as the email sender.

**Sender's Address:** Enter sender's email address.

**Address:**

**SMTP Server:** Simple Mail Transportation Protocol Server address, the outgoing email server address. It may be has

address as your incoming email server, maybe not. Please ask your email service provider for detail.

**SMTP Port:** Service port number for outgoing email.\*

**Enable SSL:** Check this box if your service provider requires a SSL secured connection.

**Attach Image/Interval:** Check Attach Image if you want to send a snapshot image with the email notification and select the interval of snapshots in seconds.

**Authentication:** Check this box if your server requires a password in order to send email. Most email servers require authentication when sending an email.

**User name:** Enter the user name of outgoing email account

**Password:** Enter the password

**Confirm:** Enter the password again to confirm that the password was entered correctly.

Click **Save** to save the changes

### Receiver

**Receiver 1:** The first receiver's name.

**Receiver 1's Address:** The first receiver's email address.

**Address:**

**Receiver 2:** The second receiver's name.

**Receiver 2's Address:** The second receiver's email address.

**Address:**

**Receiver 3:** The third receiver's name.

**Receiver 3's Address:** The third receiver's email address.

**Address:**

Click **Save** to save the changes

\*Note: Many ISPs does not allow service port 25 going through their network. Other popular ports are 587 and 465. Please consult your email service provider and ISP for detail.

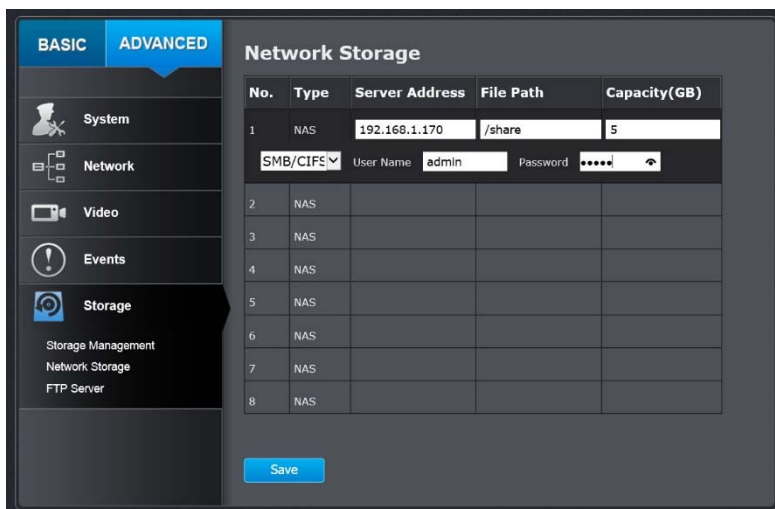
## Network Storage

### Network Storage

Network Storage must be setup before it can be managed. For storage management, please refer to the next section.

The TV-IP1315PI supports two formats of network storage file systems: NFS and CIFS. NFS, Network File System, is natively supported by Linux computers and most NAS, Network Attached Storage. CIFS, Common Internet File System, is natively supported by Windows® systems and now is generally supported by Linux. (OS X® file sharing is not standard SMB and not compatible as a network storage disk here.)

You can add up to 8 network storages for your camera. The recordings will subsequently be stored in these spaces. Save video from the first storage and then the next when the first one is full. Click on the entry to change the settings and click Save to save the settings.



**No:** The sequential number of the network storage.

**Type:** The type of storage.

**Server Address:** Enter the IP address of your network storage.

**File Path:** Enter the shared folder as file path for network storage. You can create a folder under the shared folder and make it a network volume here. Just create the folder and enter the correct path name here.

**Capacity:** Enter the size of the disk space you want to assign for this storage. The minimum disk space requirement is 8GB. If you do not want to limit the size and use the full physical disk space, put number 0 in this field.

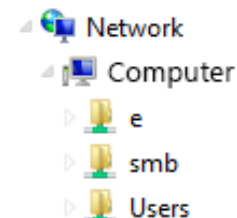
**File System:** Choose between NFS or CIFS for file system. If you assign the network storage on a Windows® computer, set it to CIFS.

**User Name:** Enter the user name if the network storage requires user name and password. Enter any non-blank letters if no authentication is required.

**Password:** Enter the password to access the network storage. Enter any non-blank letters if no authentication is required.

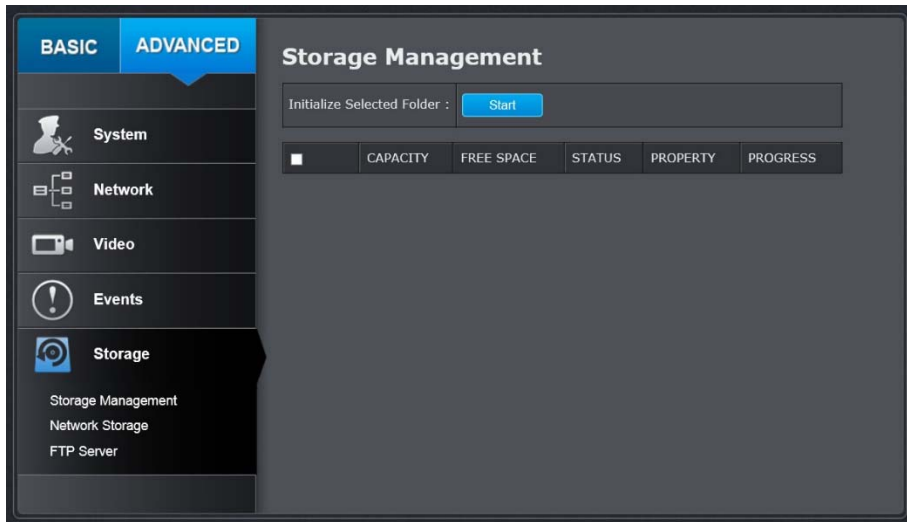
Click **Save** to save the changes. The camera may reboot to make the network storage available. Go to the next section to format and manage your network storage.

**Tip:** To create a network storage on your Windows® based system, create a shared folder and then test your set up with another computer. Enter the IP address of the computer here and enter the shared folder name with a leading forward slash. For example, if you have a shared folder named "SMB", enter "/SMB" in the **File Path**.



## Storage Management

Network Storage must be setup before it can be managed. To setup storage, please refer to the previous section.



**Format:** Select a network storage volume and then click **Format** to format your network storage. This action will format the network volume (shared folder) for video recording. Placeholder files (formatting files) will be created to make sure disk allocation is appropriate and the file searching is optimized.

The volume format is a proprietary user space storage format. Meaning that you visit the shared folder and see some structured files. Please do not modify these files manually. Modifying these files may cause recording and playback problems. Access your recording and system log via the web management user interface to download the recording and snapshots.

**Capacity:** The total capacity this network storage can use.

**Free Space:** The free space left for video recording, snapshot and log.

**Status:** The connection status to the network storage.

**Property:** This network storage is read only or can be read and write.

**Progress:** The progress of ongoing task.

*Note: The formatting progress depends on the size of the storage and the network bandwidth. It takes a while if you are formatting a big volume or the network connection is not stable.*

## FTP Server

**FTP Server**

Enable Snapshot to FTP :  Enable

Server Address : 0.0.0.0

Port : 21

User Name :  Anonymous

Password :

Confirm :

Directory Structure : Save in the root direct

Directory : With Camera Name

test

Save

|                                |   |
|--------------------------------|---|
| <b>Enable Snapshot to FTP:</b> | Check this box if you want to store snapshots on the FTP.   |
| <b>Server Address:</b>         | Enter the FTP server IP address.  |
| <b>Port:</b>                   | Enter the service port number of the FTP server.  |
| <b>User Name/Anonymous:</b>    | Check Anonymous if the FTP server does not require authentication. Enter the User Name if the FTP server requires authentication.   |
| <b>Password:</b>               | Enter the password of the FTP account.  |
| <b>Confirm:</b>                | Enter the password again to make sure the password was entered correctly.   |
| <b>Directory Structure:</b>    | When saving snapshots on an FTP server, they can be saved in a single place or organized with meaningful directory names. <ul style="list-style-type: none"> <li>Save in root directory: You can choose to store all files in the same folder of FTP login.</li> <li>Save in directory: Structure your folders with camera name or IP address.</li> </ul> |
| <b>Directory:</b>              | <ul style="list-style-type: none"> <li>Use Camera Name: Use the camera name to organize the saved files.</li> <li>Use Camera IP: Use the camera IP address to organize the saved files.</li> </ul>  |

Click **Save** to save the changes

## Appendix

### Direct video access - RTSP

To access the video directly through RTSP, just visit the camera IP address on port 554 by default. For example: 192.168.10.30:554 use the admin or user password the login.

## Regulations

### Federal Communication Commission Interference Statement

This equipment has been tested and found to comply with the limits for a Class B digital device, pursuant to Part 15 of the FCC Rules. These limits are designed to provide reasonable protection against harmful interference in a residential installation. This equipment generates uses and can radiate radio frequency energy and, if not installed and used in accordance with the instructions, may cause harmful interference to radio communications. However, there is no guarantee that interference will not occur in a particular installation. If this equipment does cause harmful interference to radio or television reception, which can be determined by turning the equipment off and on, the user is encouraged to try to correct the interference by one of the following measures:

- Reorient or relocate the receiving antenna.
- Increase the separation between the equipment and receiver.
- Connect the equipment into an outlet on a circuit different from that to which the receiver is connected.
- Consult the dealer or an experienced radio/TV technician for help.

FCC Caution: Any changes or modifications not expressly approved by the party responsible for compliance could void the user's authority to operate this equipment.

This device complies with Part 15 of the FCC Rules. Operation is subject to the following two conditions: (1) This device may not cause harmful interference, and (2) this device must accept any interference received, including interference that may cause undesired operation.

#### IMPORTANT NOTE:

#### FCC Radiation Exposure Statement:

This equipment complies with FCC radiation exposure limits set forth for an uncontrolled environment. This equipment should be installed and operated with minimum distance 20cm between the radiator & your body.

This transmitter must not be co-located or operating in conjunction with any other antenna or transmitter.

The availability of some specific channels and/or operational frequency bands are country dependent and are firmware programmed at the factory to match the intended destination. The firmware setting is not accessible by the end user.

### RoHS

This product is RoHS compliant.





## Europe – EU Declaration of Conformity

This device complies with the essential requirements of the Directive 2004/108/EC and 2006/95/EC. The following test methods have been applied in order to prove presumption of conformity with the essential requirements of the Directive 2004/108/EC and 2006/95/EC:

### Safety /EMC

EN 60950-1: 2006 + A11: 2010 + A12: 2011 + A2: 2013

EN 55024: 2010 + A1: 2015

EN 55032: 2015

EMC Directive 2014/30/EC / RoHS Directive 2011/65/EU

WEEE Directive 2012/19/EU / REACH Regulation (EC) No. 1907/2006

Low Voltage Directive 2014/35/EC

|                   |   |
|-------------------|---|
| Česky [Czech]     | TRENDnet tímto prohlašuje, že tento TV-IP1315PI je ve shodě se základními požadavky a dalšími příslušnými ustanoveními směrnice 2004/108/ES a 2006/95/ES.   |
| Dansk [Danish]    | Undertegnede TRENDnet erklærer herved, at følgende udstyr TV-IP1315PI overholder de væsentlige krav og øvrige relevante krav i direktiv 2004/108/EF og 2006/95/EF.                                    |
| Deutsch [German]  | Hiermit erkläre ich, dass das Gerät TV-IP1315PI in Übereinstimmung mit den grundlegenden Anforderungen und den übrigen einschlägigen Bestimmungen der Richtlinie 2004/108/EG und 2006/95/EG befindet. |
| Eesti [Estonian]  | Käesolevaga kinnitab TRENDnet seadme TV-IP1315PI vastavust direktiivi 2004/108/EÜ ja 2006/95/EÜ põhinõuetele ja nimetatud direktiivist tulenevatele teistele asjakohastele sätetele.                  |
| English           | Hereby, TRENDnet, declares that this TV-IP1315PI is in compliance with the essential requirements and other relevant provisions of Directive 2004/108/EC and 2006/95/EC.                              |
| Español [Spanish] | Por medio de la presente TRENDnet declara que el TV-IP1315PI cumple con los requisitos esenciales y cualesquiera otras disposiciones aplicables o exigibles de la Directiva 2004/108/CE y 2006/95/CE. |
| Ελληνική [Greek]  | ΜΕ ΤΗΝ ΠΑΡΟΥΣΑΤRENDnet ΔΗΛΩΝΕΙ ΟΤΙ ΤΟ TV-IP1315PI ΣΥΜΜΟΡΦΩΝΕΤΑΙ ΠΡΟΣ ΤΙΣ ΟΥΣΙΩΔΕΙΣ ΑΠΑΙΤΗΣΕΙΣ ΚΑΙ ΤΙΣ ΛΟΙΠΕΣ ΣΧΕΤΙΚΕΣ ΔΙΑΤΑΞΕΙΣ ΤΗΣ ΟΔΗΓΙΑΣ 2004/108/ΕΚ, 2006/95/ΕΚ κ.α.                              |

|                        |   |
|------------------------|---|
| Français [French]      | Par la présente TRENDnet déclare que l'appareil TV-IP1315PI est conforme aux exigences essentielles et aux autres dispositions pertinentes de la directive 2004/108/CE, 2006/95/CE et.      |
| Italiano [Italian]     | Con la presente TRENDnet dichiara che questo TV-IP1315PI è conforme ai requisiti essenziali ed alle altre disposizioni pertinenti stabilite dalla direttiva 2004/108/CE e 2006/95/CE.       |
| Latviski [Latvian]     | Ar šo TRENDnet deklarē, ka TV-IP1315PI atbilst Direktīvas 2004/108/EK un 2006/95/EK būtiskajām prasībām un citiem ar to saistītajiem noteikumiem.   |
| Lietuvių [Lithuanian]  | Šiuo TRENDnet deklaruojama, kad šis TV-IP1315PI atitinka esminius reikalavimus ir kitas 2004/108/EB ir 2006/95/EB Direktyvos nuostatas.   |
| Nederlands [Dutch]     | Hierbij verklaart TRENDnet dat het toestel TV-IP1315PI in overeenstemming is met de essentiële eisen en de andere relevante bepalingen van richtlijn 2004/108/EG en 2006/95/EG.             |
| Malti [Maltese]        | Hawn hekk, TRENDnet, jiddikjara li dan TV-IP1315PI jikkonforma mal-htigijiet essenzjali u ma provvedimenti oħrajn relevanti li hemm fid-Dirrettiva 2004/108/KE u 2006/95/KE.                |
| Magyar [Hungarian]     | Alulírott, TRENDnet nyilatkozom, hogy a TV-IP1315PI megfelel a vonatkozó alapvető követelményeknek és az 2004/108/EK és a 2006/95/EK irányelv egyéb előírásainak.                           |
| Polski [Polish]        | Niniejszym TRENDnet oświadcza, że TV-IP1315PI jest zgodny z zasadniczymi wymogami oraz pozostałymi stosownymi postanowieniami Dyrektywy 2004/108/WE i 2006/95/.                             |
| Português [Portuguese] | TRENDnet declara que este TV-IP1315PI está conforme com os requisitos essenciais e outras disposições da Directiva 2004/108/CE e 2006/95/CE.  |
| Slovensko [Slovenian]  | TRENDnet izjavlja, da je ta TV-IP1315PI v skladu z bistvenimi zahtevami in ostalimi relevantnimi določili direktive 2004/108/ES in 2006/95/ES.  |
| Slovensky [Slovak]     | TRENDnet týmto vyhlasuje, že TV-IP1315PI spĺňa základné požiadavky a všetky príslušné ustanovenia Smernice 2004/108/ES a 2006/95/ES.  |
| Suomi [Finnish]        | TRENDnet vakuuttaa täten että TV-IP1315PI tyyppinen laite on direktiivin 2004/108/EY ja 2006/95/EY oleellisten vaatimusten ja sitä koskevien direktiivin muiden ehtojen mukainen.           |
| Svenska [Swedish]      | Härmed intygar TRENDnet att denna TV-IP1315PI står i överensstämmelse med de väsentliga egenskapskrav och övriga relevanta bestämmelser som framgår av direktiv 2004/108/EG och 2006/95/EG. |

## Limited Warranty

TRENDnet warrants its products against defects in material and workmanship, under normal use and service, for the following lengths of time from the date of purchase.

### TV-IP1315PI – 3 Years Warranty

If a product does not operate as warranted during the applicable warranty period, TRENDnet shall reserve the right, at its expense, to repair or replace the defective product or part and deliver an equivalent product or part to the customer. The repair/replacement unit's warranty continues from the original date of purchase. All products that are replaced become the property of TRENDnet. Replacement products may be new or reconditioned. TRENDnet does not issue refunds or credit. Please contact the point-of purchase for their return policies.

TRENDnet shall not be responsible for any software, firmware, information, or memory data of customer contained in, stored on, or integrated with any products returned to TRENDnet pursuant to any warranty.

There are no user serviceable parts inside the product. Do not remove or attempt to service the product by any unauthorized service center. This warranty is voided if (i) the product has been modified or repaired by any unauthorized service center, (ii) the product was subject to accident, abuse, or improper use (iii) the product was subject to conditions more severe than those specified in the manual.

Warranty service may be obtained by contacting TRENDnet within the applicable warranty period and providing a copy of the dated proof of the purchase. Upon proper submission of required documentation a Return Material Authorization (RMA) number will be issued. An RMA number is required in order to initiate warranty service support for all TRENDnet products. Products that are sent to TRENDnet for RMA service must have the RMA number marked on the outside of return packages and sent to TRENDnet prepaid, insured and packaged appropriately for safe shipment. Customers shipping from outside of the USA and Canada are responsible for return shipping fees. Customers shipping from outside of the USA are responsible for custom charges, including but not limited to, duty, tax, and other fees.

**WARRANTIES EXCLUSIVE:** IF THE TRENDNET PRODUCT DOES NOT OPERATE AS WARRANTED ABOVE, THE CUSTOMER'S SOLE REMEDY SHALL BE, AT TRENDNET'S OPTION, REPAIR OR REPLACE. THE FOREGOING WARRANTIES AND REMEDIES ARE EXCLUSIVE AND ARE IN LIEU OF ALL OTHER WARRANTIES, EXPRESSED OR IMPLIED, EITHER IN FACT OR BY OPERATION OF LAW, STATUTORY OR OTHERWISE, INCLUDING WARRANTIES OF MERCHANTABILITY AND FITNESS FOR A PARTICULAR PURPOSE.

TRENDNET NEITHER ASSUMES NOR AUTHORIZES ANY OTHER PERSON TO ASSUME FOR IT ANY OTHER LIABILITY IN CONNECTION WITH THE SALE, INSTALLATION MAINTENANCE OR USE OF TRENDNET'S PRODUCTS.

TRENDNET SHALL NOT BE LIABLE UNDER THIS WARRANTY IF ITS TESTING AND EXAMINATION DISCLOSE THAT THE ALLEGED DEFECT IN THE PRODUCT DOES NOT EXIST OR WAS CAUSED BY CUSTOMER'S OR ANY THIRD PERSON'S MISUSE, NEGLIGENCE, IMPROPER INSTALLATION OR TESTING, UNAUTHORIZED ATTEMPTS TO REPAIR OR MODIFY, OR ANY OTHER CAUSE BEYOND THE RANGE OF THE INTENDED USE, OR BY ACCIDENT, FIRE, LIGHTNING, OR OTHER HAZARD.

**LIMITATION OF LIABILITY:** TO THE FULL EXTENT ALLOWED BY LAW TRENDNET ALSO EXCLUDES FOR ITSELF AND ITS SUPPLIERS ANY LIABILITY, WHETHER BASED IN CONTRACT OR TORT (INCLUDING NEGLIGENCE), FOR INCIDENTAL, CONSEQUENTIAL, INDIRECT, SPECIAL, OR PUNITIVE DAMAGES OF ANY KIND, OR FOR LOSS OF REVENUE OR PROFITS, LOSS OF BUSINESS, LOSS OF INFORMATION OR DATE, OR OTHER FINANCIAL LOSS ARISING OUT OF OR IN CONNECTION WITH THE SALE, INSTALLATION, MAINTENANCE, USE, PERFORMANCE, FAILURE, OR INTERRUPTION OF THE POSSIBILITY OF SUCH DAMAGES, AND LIMITS ITS LIABILITY TO REPAIR, REPLACEMENT, OR REFUND OF THE PURCHASE PRICE PAID, AT TRENDNET'S OPTION. THIS DISCLAIMER OF LIABILITY FOR DAMAGES WILL NOT BE AFFECTED IF ANY REMEDY PROVIDED HEREIN SHALL FAIL OF ITS ESSENTIAL PURPOSE.

**Governing Law:** This Limited Warranty shall be governed by the laws of the state of California.

Some TRENDnet products include software code written by third party developers. These codes are subject to the GNU General Public License ("GPL") or GNU Lesser General Public License ("LGPL").

Go to <http://www.trendnet.com/gpl> or <http://www.trendnet.com> Download section and look for the desired TRENDnet product to access to the GPL Code or LGPL Code. These codes are distributed WITHOUT WARRANTY and are subject to the copyrights of the developers. TRENDnet does not provide technical support for these codes. Please go to <http://www.gnu.org/licenses/gpl.txt> or <http://www.gnu.org/licenses/lgpl.txt> for specific terms of each license.

2/14/2020

TV-IP1315PI 1.0

# TRENDnet<sup>®</sup>

## Product Warranty Registration

Please take a moment to register your product online.  
Go to TRENDnet's website at <http://www.trendnet.com/register>

TRENDnet  
20675 Manhattan Place  
Torrance, CA 90501. USA

---