



SBO-147BA

Conduit Hole Adapter

FC |  | CE | ENEC

Key Features

- Material: Cover- Aluminum, Top cover - Polycarbonate(PC)
- Dimensions: 48.5(W)x41(H)x56.7(D)mm(1.91x1.61x2.23")
- Weight: 45g(0.1lb)
- Color: White
- Conduit hole: 19.1mm(3/4")(M25)

SBO-147BA

Conduit Hole Adapter



Specifications

Mechanical

Color	White
Material	Aluminum + PC(top cover)
RAL code	RAL9003
Product dimensions / weight	48.5(W)x41(H)x56.7(D)mm(1.91x1.61x2.23"), 45g(0.1lb)
Conduit hole	19.1mm(3/4")(M25)
Supported products	XNO-C6083RV/C7083RV/C8083RV/C9083RV ※ For further compatible models, please visit our website or use Toolbox

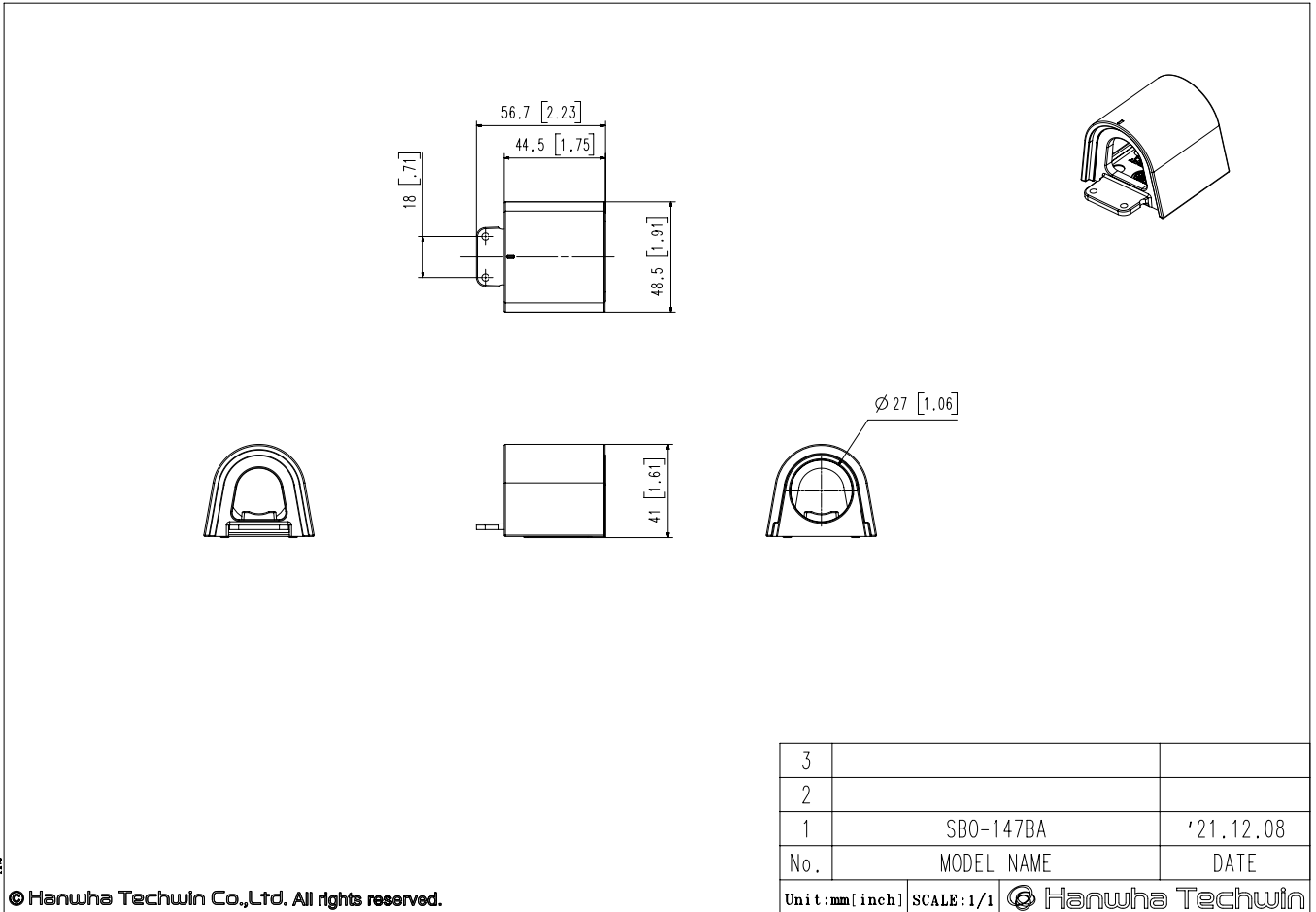
SBO-147BA

Conduit Hole Adapter



Unit: mm [inch]

CAD



A2

© Hanwha Techwin Co., Ltd. All rights reserved.