

AI Camera Plug-in

User Manual

For Genetec

About This User Manual

This manual describes how to register the AI camera of **Hanwha Techwin** Co., Ltd., how to install **AI Camera Plug-in**, and how to search for AI analytics event for the **Genetec Security Center** program of **Genetec**. Please read this manual carefully before using the product for proper use.

- This document explains how to use the product based on its defaults and default screens.
- The content in this document is subject to change depending on the product software updates and company policies and to partial changes without prior notification to users.

Target Audience

The content of this User Manual is intended for users of the AI camera made by **Hanwha Techwin** Co., Ltd. and the **Genetec Security Center** program of **Genetec**.

- To learn how to install and set up the **Genetec Security Center** program, please visit **Genetec's** official website (<https://www.genetec.com>).

Product Usage

Users of this product may search for object (person/face/vehicle/license plate) detection events analyzed by the AI camera, and play video.

AI Camera Plug-in is based on the AI camera of **Hanwha Techwin** Co., Ltd. and **Genetec Security Center** program of **Genetec**. Please refer to the following sites for details.

- **Hanwha Techwin:** <http://www.hanwha-security.com>
- **Genetec:** <https://www.genetec.com>

Copyright Notice

©2021 Hanwha Techwin Co., Ltd. All rights reserved.

Trademark

All the trademarks in this document have been registered, and any trademarks other than this product have been registered by each of their corresponding companies.

Restriction

This document is protected by copyright. Under no circumstances may reproduction, distribution, or modification of this document, in whole or in part, be made without an official consent.

Disclaimer

Hanwha Techwin Co., Ltd. made its best efforts to ensure the completeness and accuracy of the information provided in this document, but nonetheless it does not guarantee them.

The user is solely responsible for the consequences of using this document. Hanwha Techwin Co., Ltd. may change some parts of this document without a prior notice.

Table of Contents

About This User Manual	2
Target Audience.....	2
Product Usage.....	2
Copyright Notice	3
Learn about AI Camera Plug-in.....	6
What is AI Camera Plug-in?.....	6
Learn about AI Camera Plug-in system configuration	6
System requirements.....	7
Supported cameras.....	7
Camera Setup and Registration	8
Setting up camera	8
Registering Camera.....	11

Installing AI Camera Plug-in..... 13

Installing Server AI Camera Plug-in	13
Updating Server AI Camera Plug-in.....	19
Uninstalling Server AI Camera Plug-in.....	21
Installing Client AI Camera Plug-in	23
Updating Client AI Camera Plug-in.....	24
Uninstalling Client AI Camera Plug-in.....	25
Checking Client AI Camera Plug-in Version	26

Searching for AI Analytics Events 27

Searching for Persons	27
Searching for Faces	29
Searching for Vehicles	31
Searching for Vehicle License Plates.....	33
Setting Up Event Area	35
Open Source License Notification on the Product	39

Learn about AI Camera Plug-in

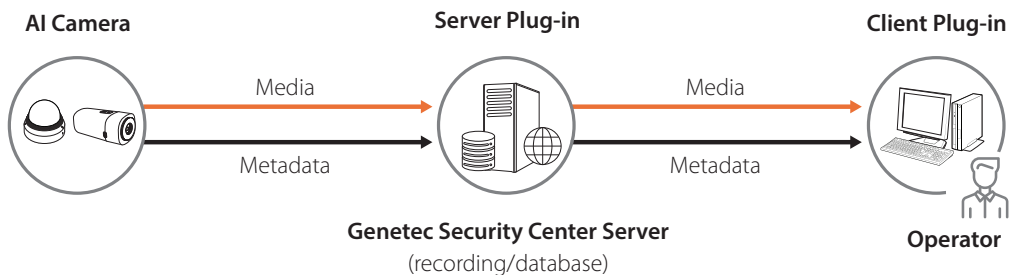
What is AI Camera Plug-in?

AI Camera Plug-in uses detailed object conditions to search for object (person/face/vehicle/license plate) detection events analyzed by the AI camera in the **Genetec Security Center** program and play video.

AI Camera Plug-in was developed using the Genetec Security Center SDK.

Learn about AI Camera Plug-in system configuration

AI Camera Plug-in consists of the following:



- **AI Camera:** A camera that supports AI analytics.
- **Genetec Security Center Server:** Saves and manages videos and data from the Genetec Security Center program.
- **Server Plug-in:** A plug-in that sends events analyzed by the AI camera to the Genetec Security Center server.
- **Client Plug-in:** A plug-in that adds AI event search menu in the Genetec Security Center program.
- **Operator:** A PC that runs the Genetec Security Center program.

System requirements

The following are the system requirements for running the **AI Camera Plug-in**:

- **OS:** Windows 10 (64-bit) or later (for installing Genetec Security Center)
- **CPU:** Intel Core i7-4770
- **RAM:** 8 GB
- **HDD:** 120 GB or more, SSD
- **Genetec Security Center:** Genetec Security Center 5.9.2.0 or later

Supported cameras

The following are the Hanwha Techwin AI cameras that support the **AI Camera Plug-in**:


- P series
 - PNB-A9001, A6001
 - PND-A9081RF, A6081RF
 - PND-A9081RV, A6081RV
 - PNO-A9081R, A6081R
 - PNV-A9081R, A6081R
- T series
 - TNB-9000

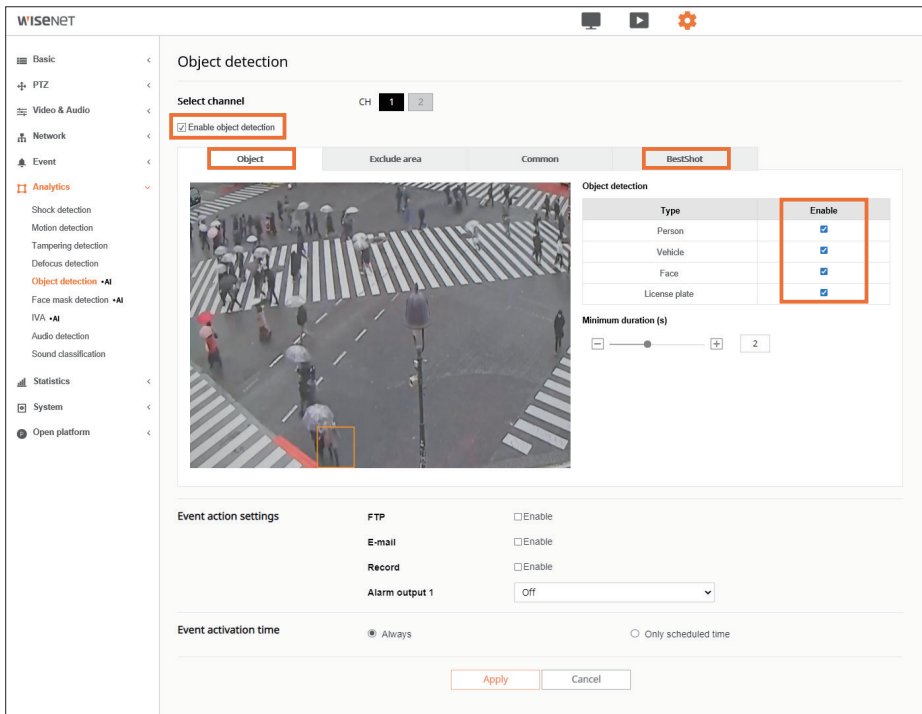
Camera Setup and Registration

Setting up camera

Enable AI analytics for the AI camera to run the **AI Camera Plug-in**.

In order to use the AI analytics function, **Object** and **BestShot** detection must be enabled.

1. Launch the web browser.
2. Enter the IP address of the AI camera. (e.g. http://192.168.9.107)
3. Enter **ID** and **Password** to log in to the camera web viewer.
4. Select  **Setup** and click **Analytics**.
5. Click **Object detection** and check **Enable object detection** box.
On **Object** and **BestShot** tabs, check **Enable** box for the object type you want to detect.
Click **Apply**.

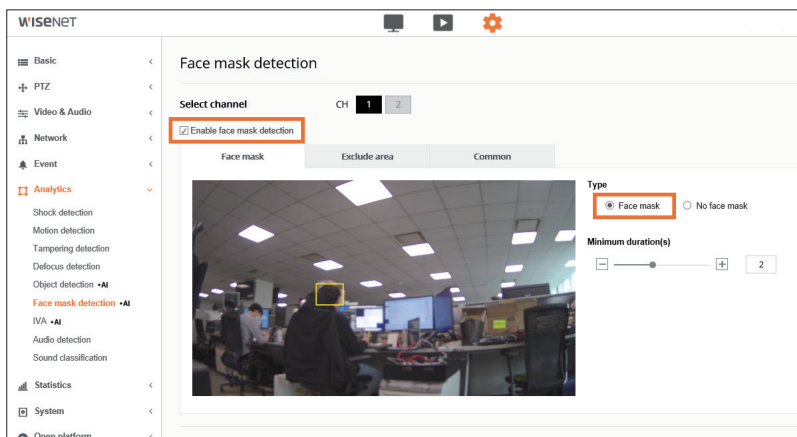


Note

In order to use AI analytics, you must check **Enable object detection** and **Enable** boxes for the object type you want to detect.

6. Click Face mask detection.

Check **Enable face mask detection** and **Face mask** boxes for the detection type you want. Click **Apply**.

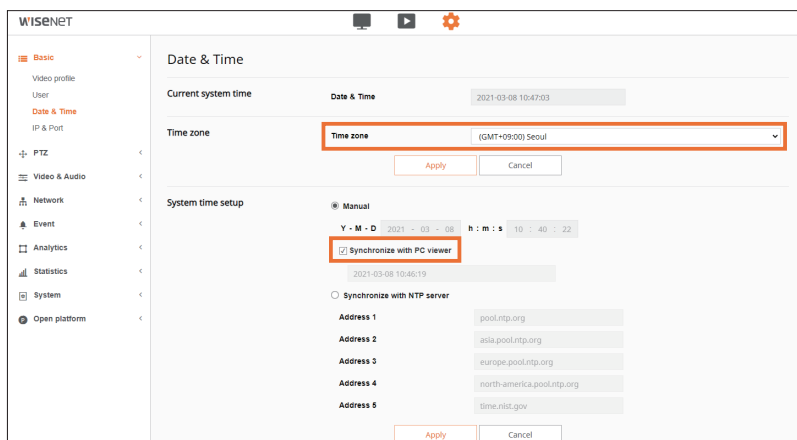


Note

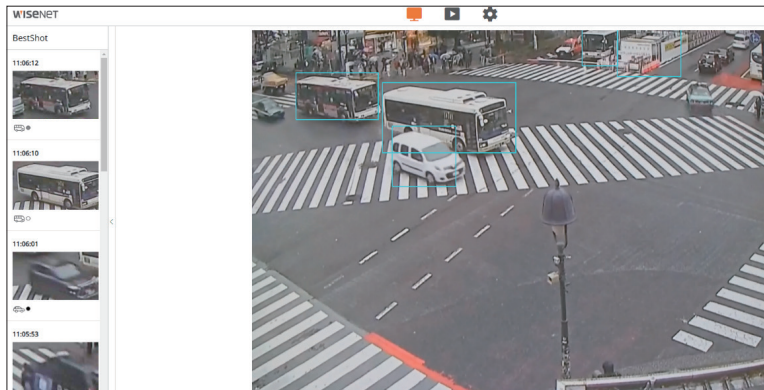
Face mask detection is supported in AI camera firmware version 1.41.03 or later.

7. Click Basic > Date & Time.

Select the **Time zone** identical with the Genetec Security Center Server and click **Apply**. Check **Synchronize with PC viewer** and click **Apply**.



8. To see if AI-analyzed event detect is set, select  **Live** and check the BestShot list on the left.

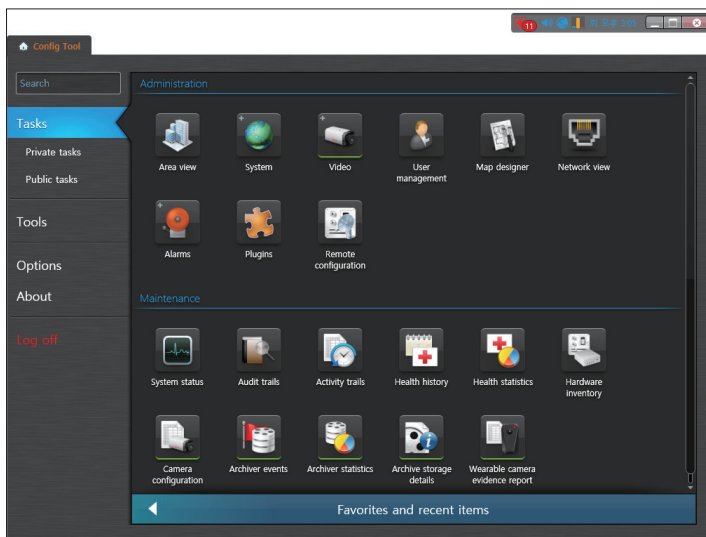


Registering Camera

You can register your AI camera to the **Config Tool** program to use the **AI Camera Plug-in**.

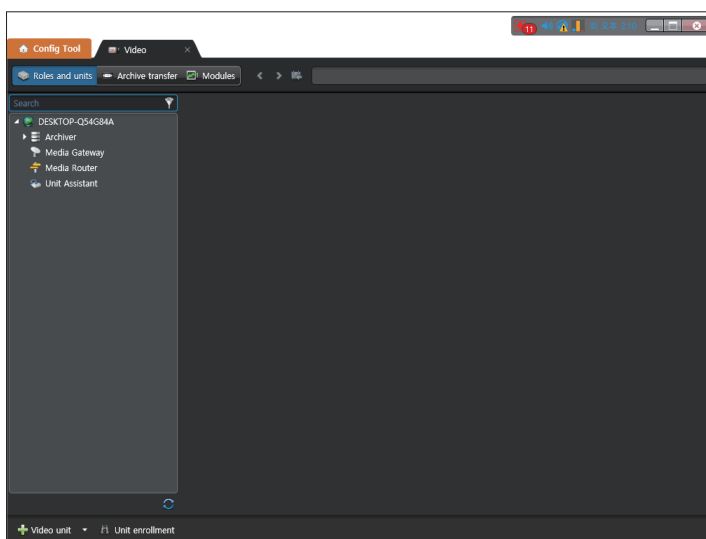
You must select Hanwha protocol and enable the use of metadata.

1. Execute **Config Tool** program.

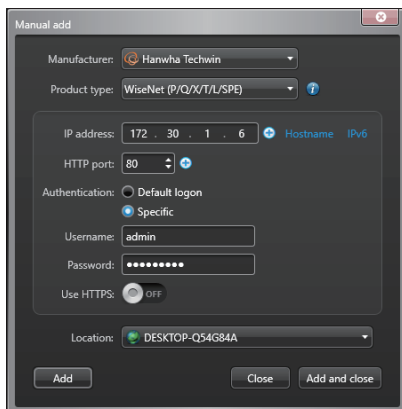


2. Select **Task > Video**.

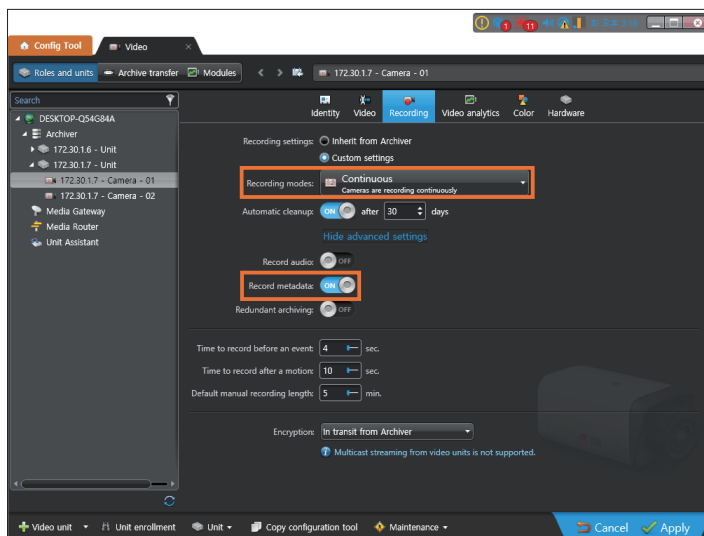
Then, **Video** tab will be added.



3. Click **Video unit** on the bottom left.
Then, **Manual add** window appears.



4. Select **Hanwha Techwin** for manufacturer and select **WiseNet(P/Q/X/T/L/SPE)** for product type. Enter IP address and account information, and click the **Add** button.
5. Select the added camera from the list on the left, and click **Recording**. You must set **Recording modes** to **Continuous** and **Record metadata** to **ON**.

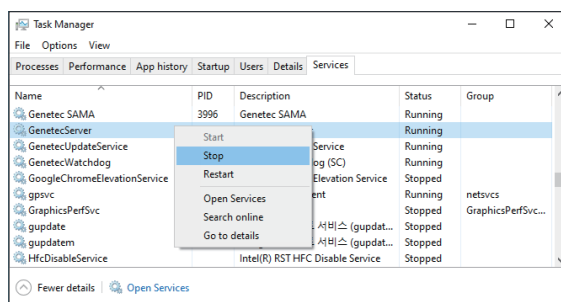


Installing AI Camera Plug-in

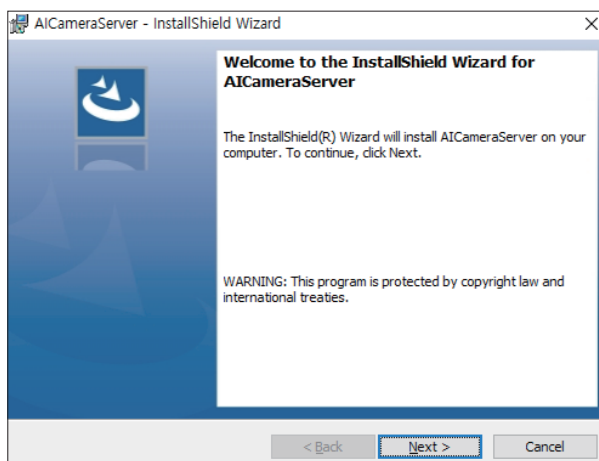
Installing Server AI Camera Plug-in

AI Camera Plug-in can be installed on the PC where the **Server Admin** program is already installed.

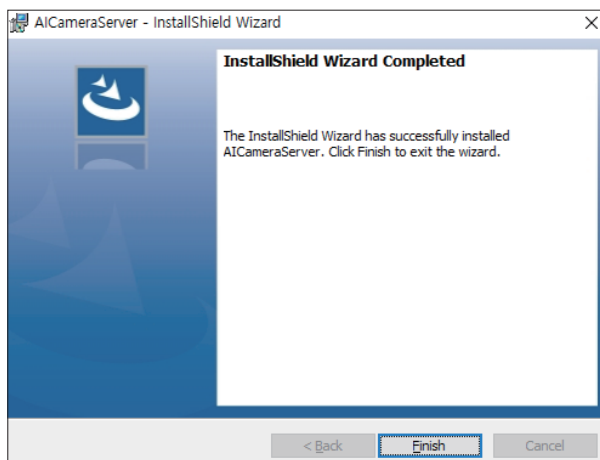
1. Stop the **Genetec Server** service.



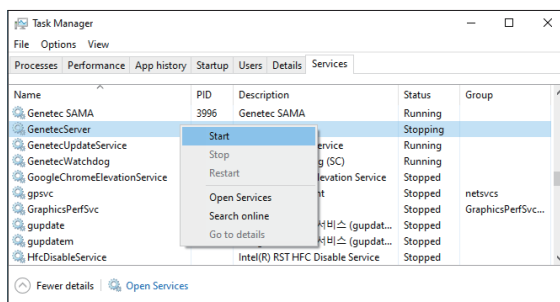
- You can stop the service by selecting **Windows Task Manager > Services > GenetecServer** and then right-clicking.
2. Execute **AICameraPluginServer_forGenetec_v1.0.1_210618.exe** installation file. When the installation wizard appears, click **Next**.



- When installation is complete, click **Finish** to exit.



- Restart the **Genetec Server** service.

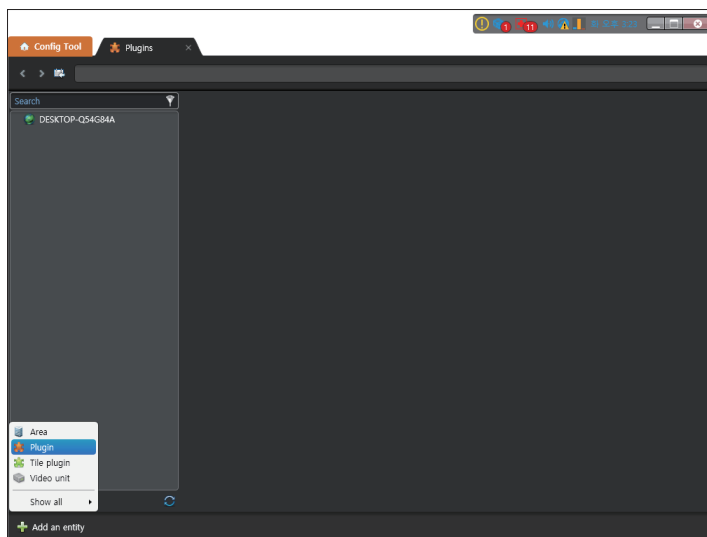


- You can start the service by selecting **Windows Task Manager > Services > GenetecServer** and then right-clicking.

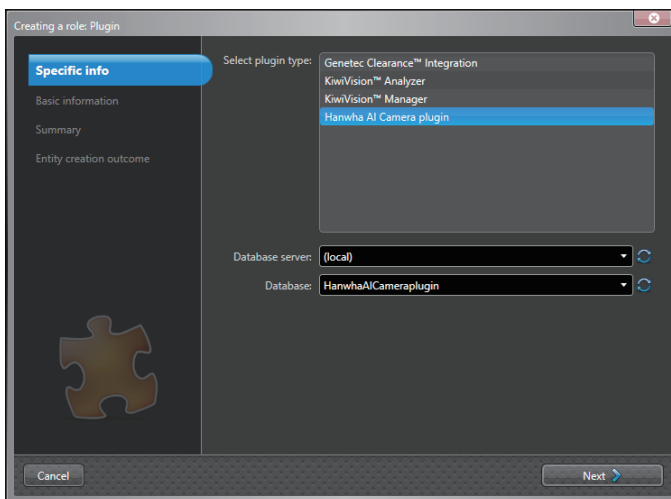
- Execute **Config Tool** program.
- Select **Task > Plugins**.
Then, **Plugins** tab will be added.



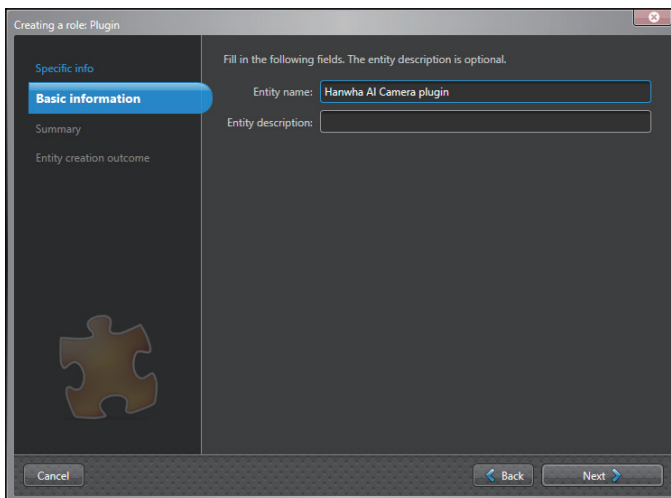
- Click **Add an entity** on the bottom left and select **Plugin**.



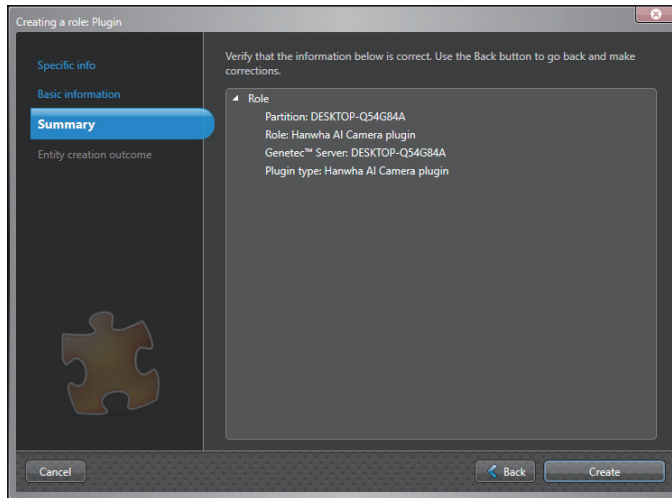
8. Select **Hanwha AI Camera plugin** and click **Next**.



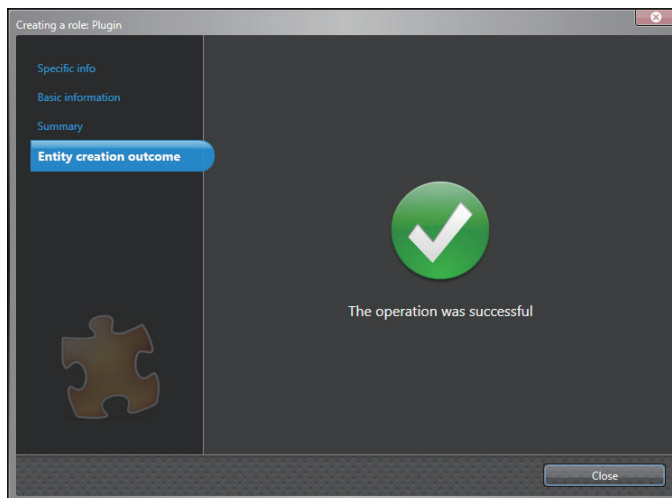
9. Set the Plugin name and description, and click **Next**.



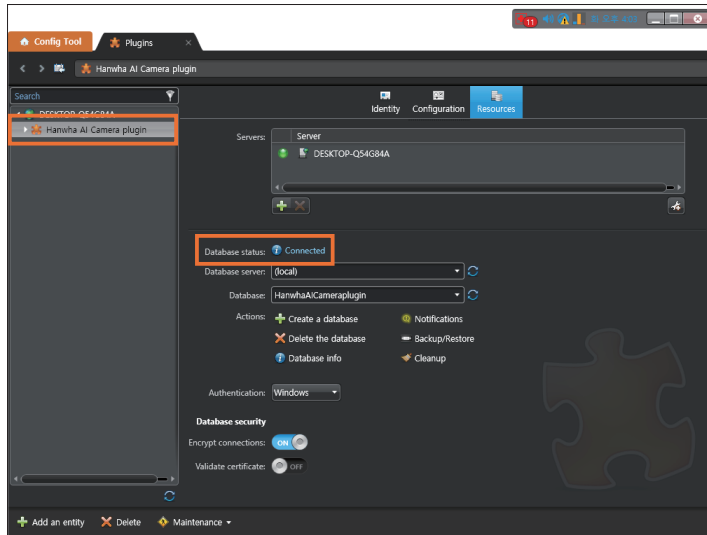
10. Check the Plugin info and click **Create**.



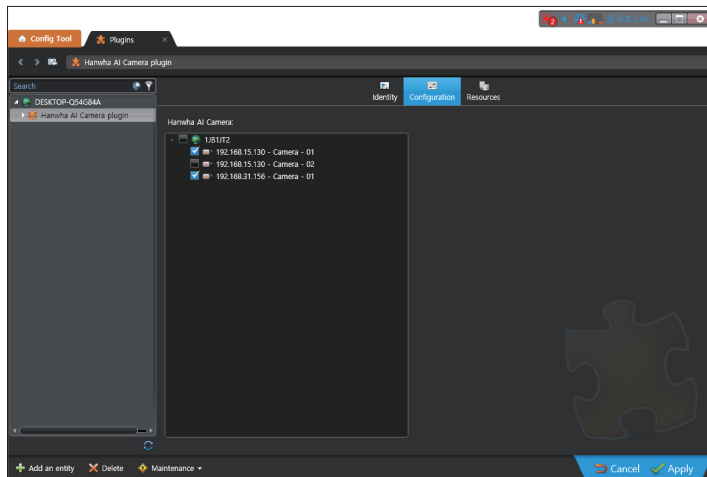
11. Once the Plugin is installed, click **Close**.



12. Select **Hanwha AI Camera plugin** from the list on the left and click **Resources**.
Check to see if **Database status** is set to **Connected**.

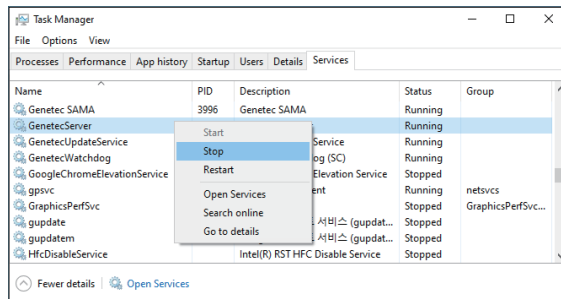


13. Click **Configuration**.
Select the camera you want to enable from the camera list and click **Apply**.

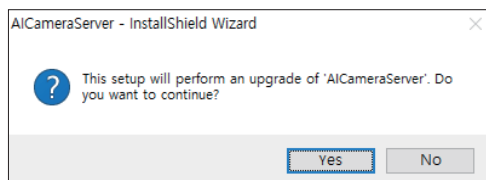


Updating Server AI Camera Plug-in

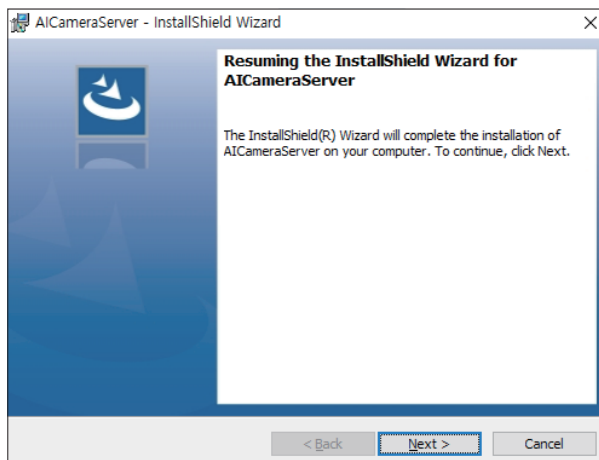
1. Stop the **Genetec Server** service.



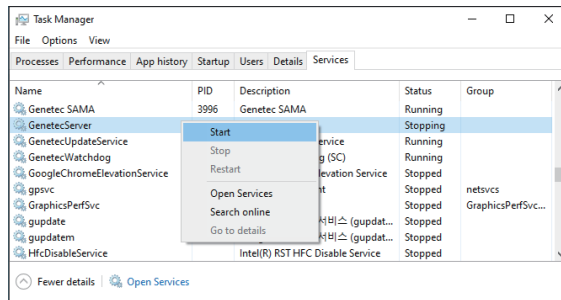
- You can stop the service by selecting **Windows Task Manager > Services > GenetecServer** and then right-clicking.
2. Execute **AIcameraPluginServer_forGenetec_v1.0.1_210618.exe** installation file. When update start screen appears, click **Yes**.



3. To start updating, click **Next**.



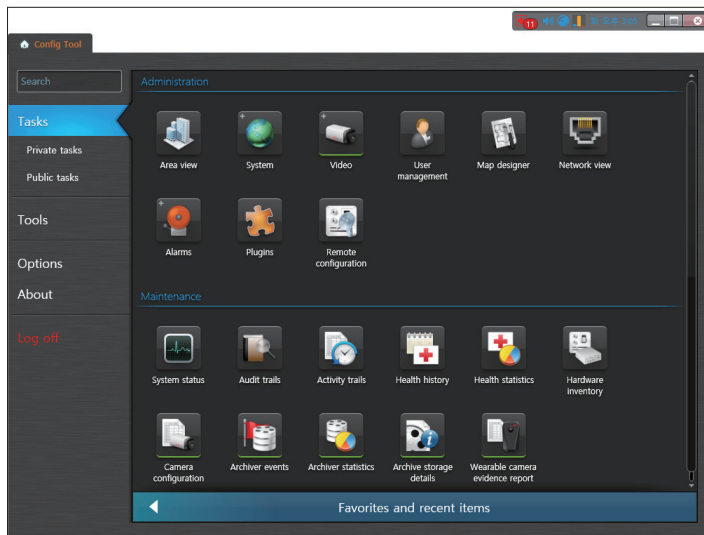
4. When update is complete, click **Finish** to exit.
5. Restart the **Genetec Server** service.



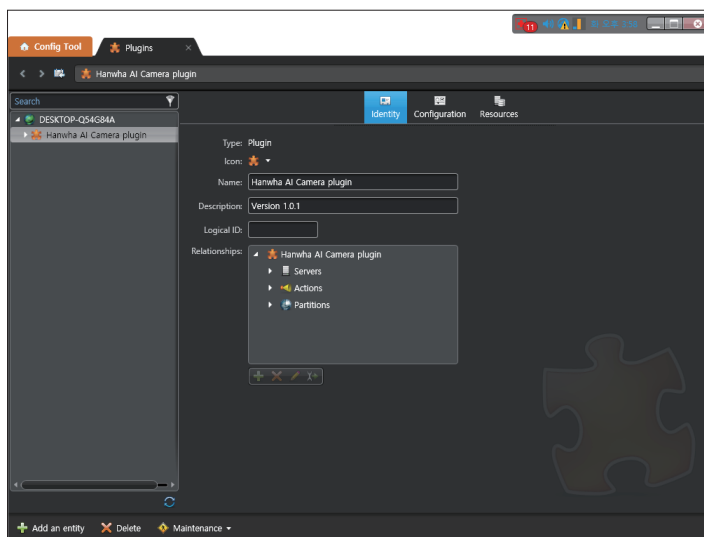
- You can start the service by selecting **Windows Task Manager > Services > GenetecServer** and then right-clicking.

Uninstalling Server AI Camera Plug-in

1. Execute Config Tool program.

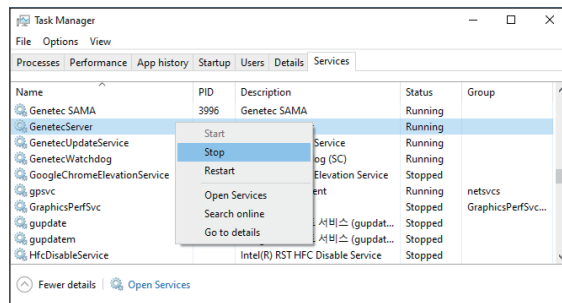


2. Select Task > Plugins.
Then, Plugins tab will be added.



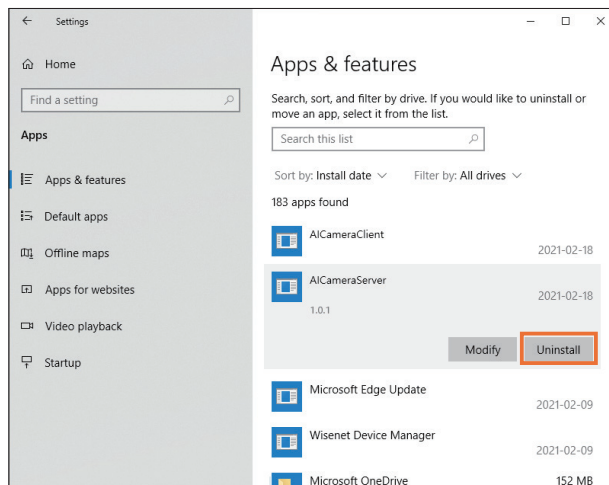
3. Select Hanwha AI Camera plugin from the list on the left.
Click Delete on the bottom left.

4. Stop the Genetec Server service.

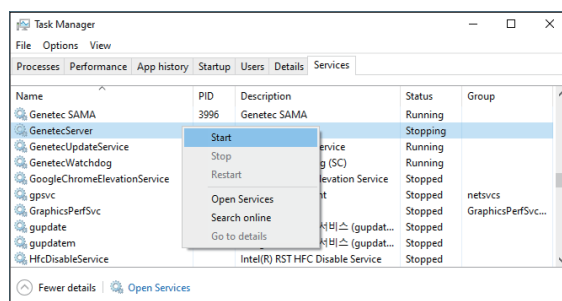


- You can stop the service by selecting **Windows Task Manager > Services > GenetecServer** and then right-clicking.

5. Click **Start > Setup > Apps > Apps & Features > AICameraServer > Uninstall**. Then, Server Plug-in will be uninstalled.



6. Restart the Genetec Server service.

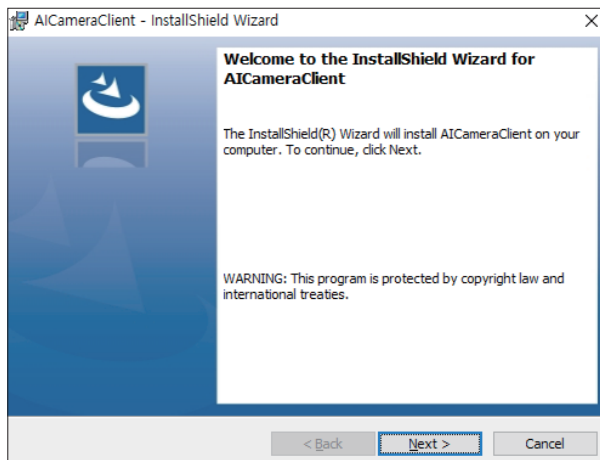


- You can start the service by selecting **Windows Task Manager > Services > GenetecServer** and then right-clicking.

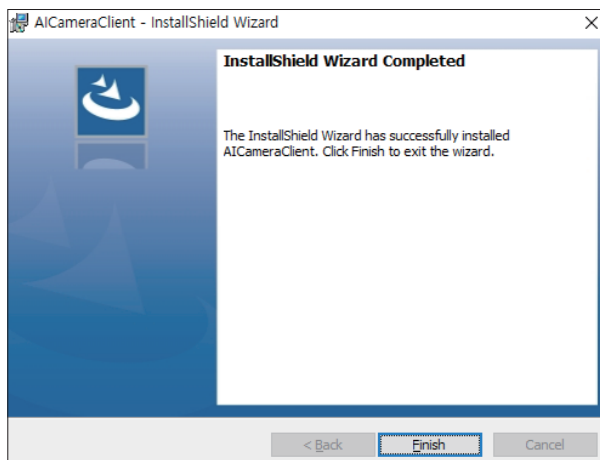
Installing Client AI Camera Plug-in

AI Camera Plug-in can be installed on the PC where the **Security Desk** program is already installed.

1. Close the **Security Desk** program.
2. Execute **AICameraPluginClient_forGenetec_v1.0.exe** installation file.
When the installation wizard appears, click **Next**.

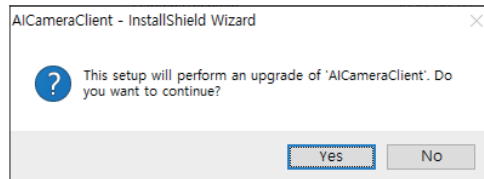


3. When installation is complete, click **Finish** to exit.

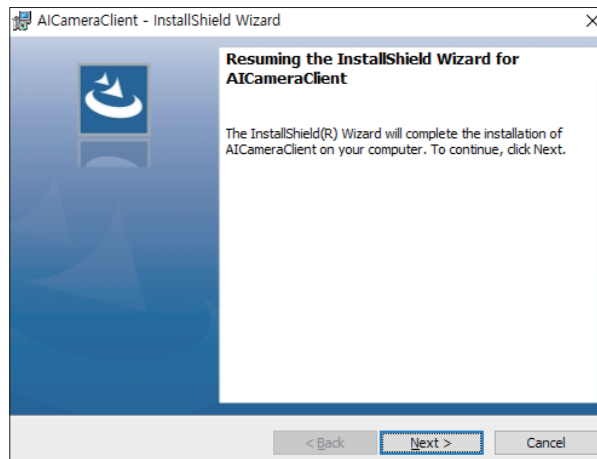


Updating Client AI Camera Plug-in

1. Close the **Security Desk** program.
2. Execute **AIcameraPluginClient_forGenetec_v1.0.exe** installation file.
When update start screen appears, click **Yes**.



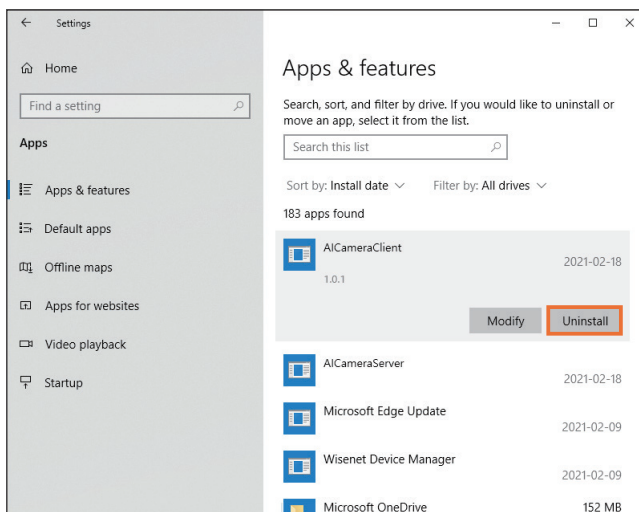
3. To start updating, click **Next**.



4. When update is complete, click **Finish** to exit.

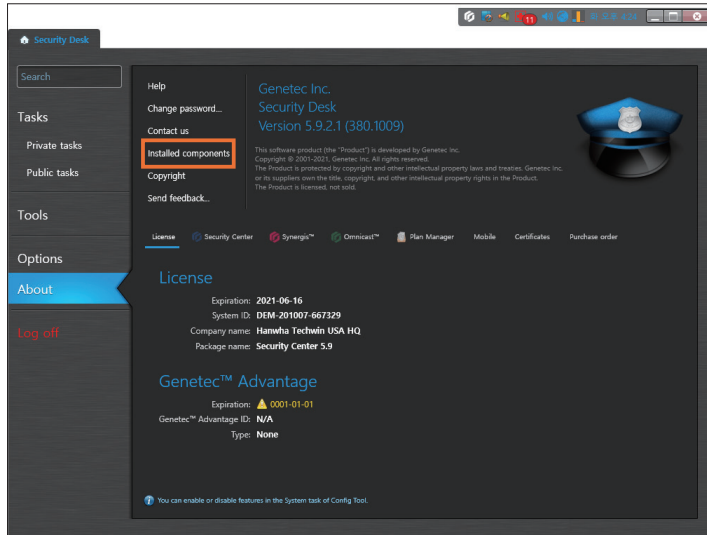
Uninstalling Client AI Camera Plug-in

1. Close the **Security Desk** program.
2. Click **Start** > **Setup** > **Apps** > **Apps & Features** > **AICameraClient** > **Uninstall**. Then, Client Plug-in will be uninstalled.

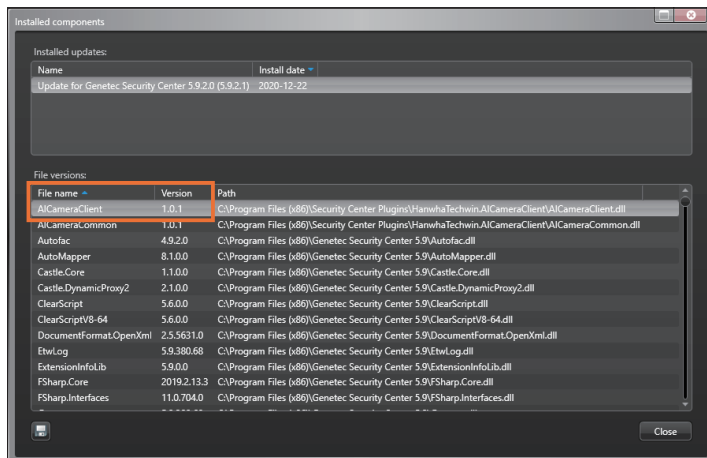


Checking Client AI Camera Plug-in Version

1. Execute Security Desk (or Config Tool) program.
2. Click About > Installed components.



3. Check the version information of AICameraClient.



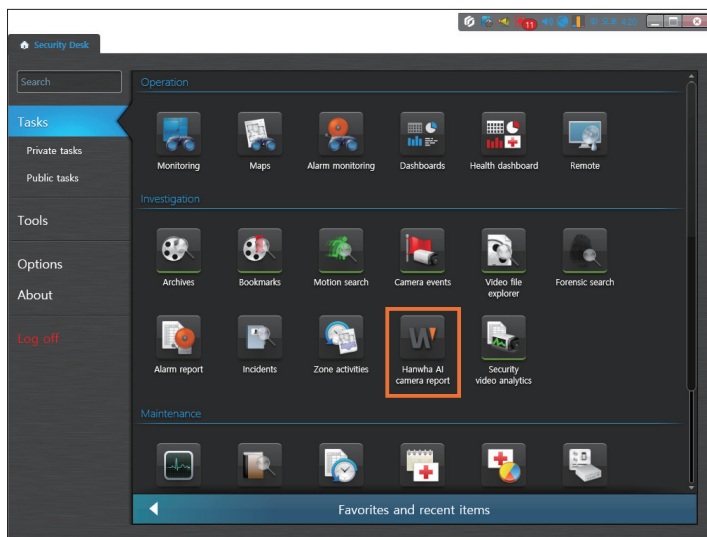
Searching for AI Analytics Events

AI analytics event saves only one event per object based on the most accurate time of recognizing an object (person/face/vehicle/license plate) that is being continuously analyzed by the AI camera.

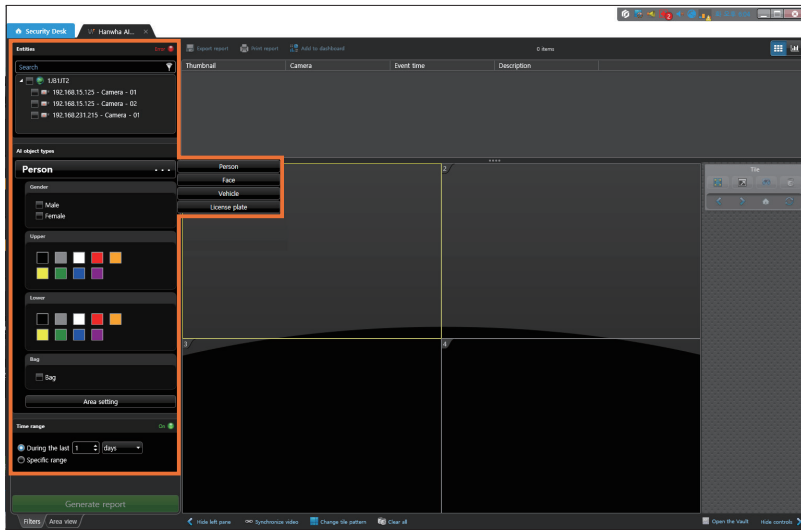
You can search for the saved events by setting the details of each object or camera area.

Searching for Persons

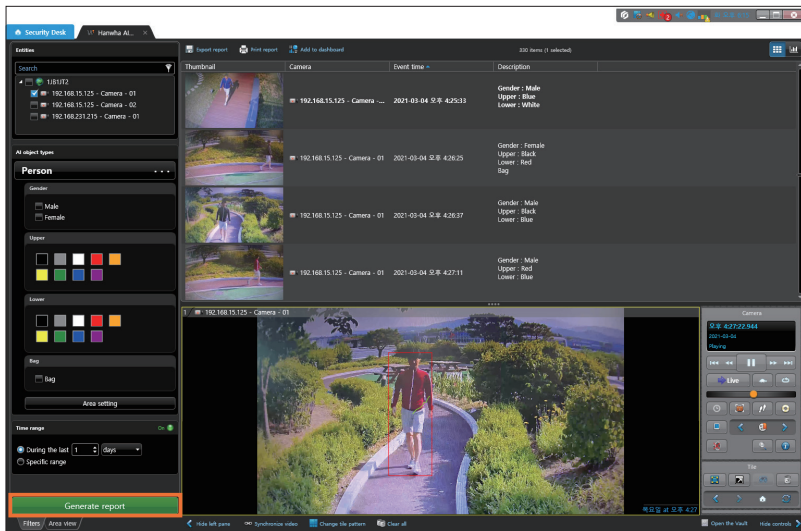
1. Execute **Security Desk** program.
2. Select **Task > Hanwha AI camera report**.
Then, **Hanwha AI camera report** tab will be added.



- Select the camera and time range that you want to search for. Click the **Person** button to select **Person** for the AI object type.



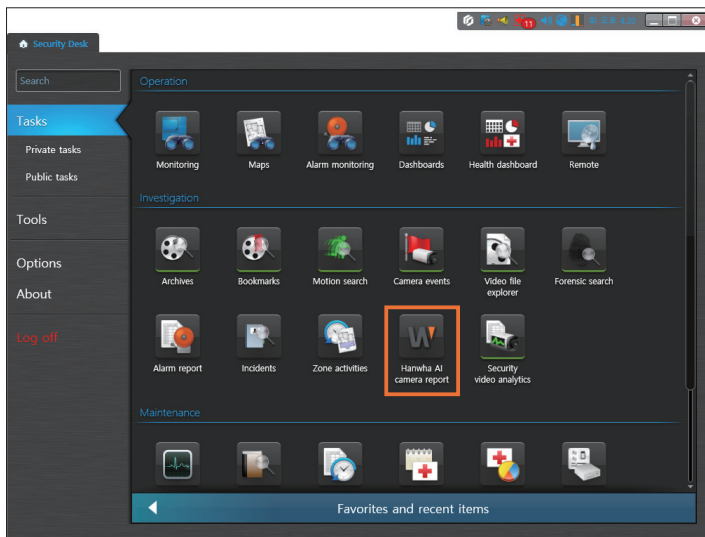
- After setting the details, click the **Generate report** button. Then, search results are displayed. From the list, you can select an event and play its video.



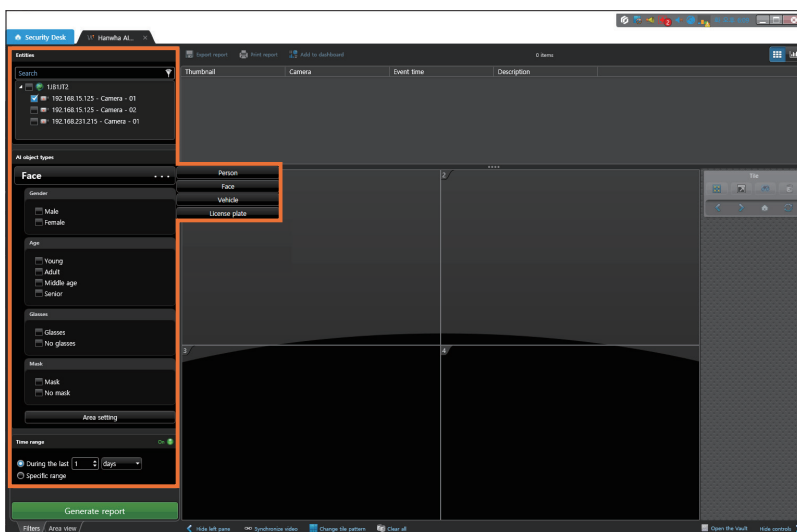
- If you select **Male** only from **Gender**, women and objects with unidentified gender are excluded from the search results.
If you select both **Male** and **Female**, those objects with unidentified gender are excluded from the search results.
- If you select **Male** and **Bag**, only those objects identified as male wearing a bag are included in the search results.
- For **Color**, up to two colors can be selected. Searching is valid if any one of the two colors is present.

Searching for Faces

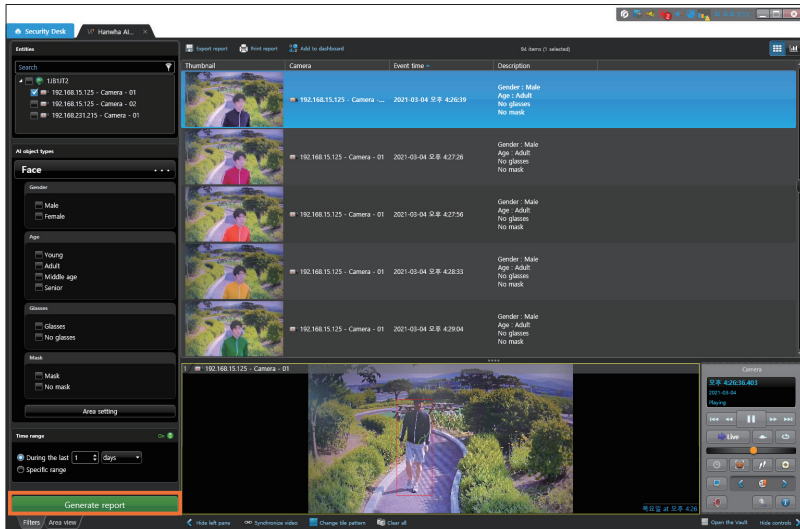
1. Execute **Security Desk** program.
2. Select **Task > Hanwha AI camera report**.
Then, **Hanwha AI camera report** tab will be added.



3. Select the camera and time range that you want to search for.
Click the **...** button to select **Face** for the AI object type.



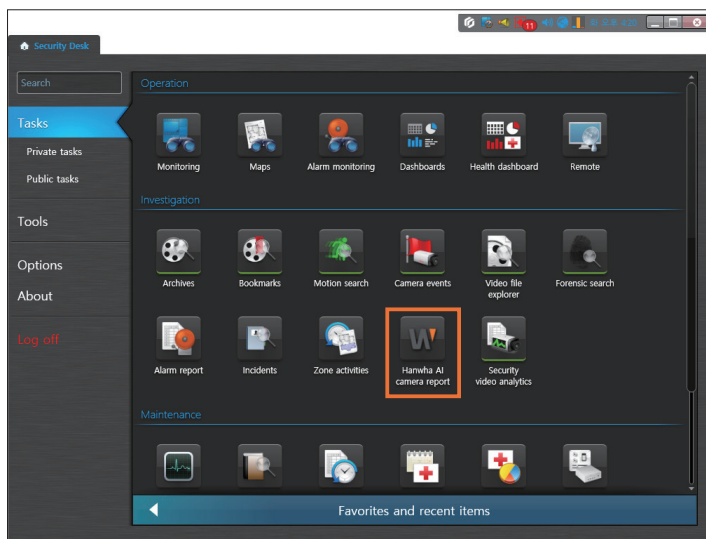
- After setting the details, click the **Generate report** button. Then, search results are displayed. From the list, you can select an event and play its video.



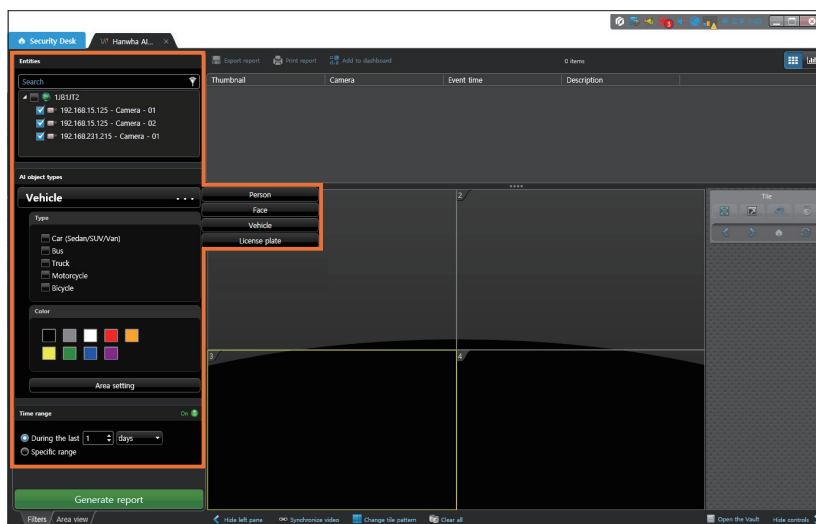
- If you select **Male** only from **Gender**, women and objects with unrecognized gender are excluded from the search results.
If you select both **Male** and **Female**, those objects with unrecognized gender are excluded from the search results.
- If you select **Male** and **Glasses**, those objects recognized as male wearing glasses are included in the search results.
Objects either not wearing glasses or uncertain of wearing glasses are excluded from the search results.
- If you select **Young** only from **Age**, Adult/Middle age/Senior and objects with unrecognized age are excluded from the search results.
- If you select both **Glasses** and **No glasses**, those objects uncertain of wearing glasses are excluded from the search results.
- If you select both **Mask** and **No mask**, those objects uncertain of wearing a mask are excluded from the search results.

Searching for Vehicles

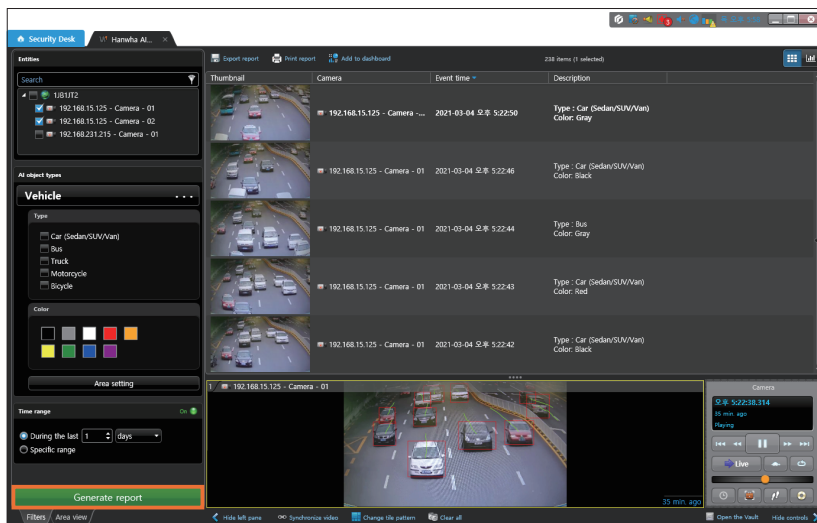
1. Execute **Security Desk** program.
2. Select **Task > Hanwha AI camera report**.
Then, **Hanwha AI camera report** tab will be added.



3. Select the camera and time range that you want to search for.
Click the **...** button to select **Vehicle** for the AI object type.



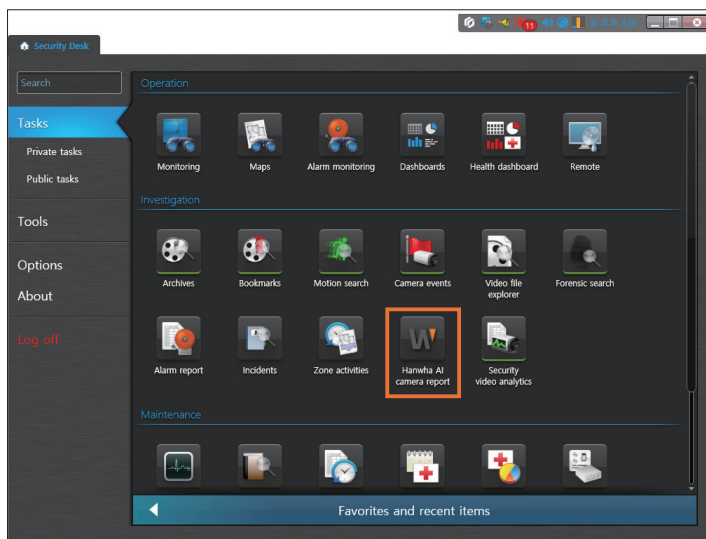
- After setting the details, click the **Generate report** button. Then, search results are displayed. From the list, you can select an event and play its video.



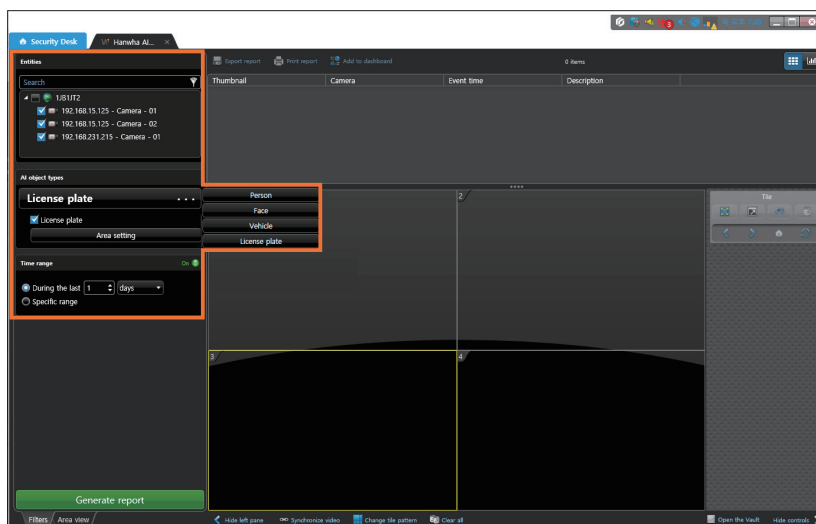
- If you select **Bus** only from **Type**, those objects with unchecked or unidentified types are excluded from the search results.
- For **Color**, up to two colors can be selected. Searching is valid if any one of the two colors is present.

Searching for Vehicle License Plates

1. Execute **Security Desk** program.
2. Select **Task > Hanwha AI camera report**.
Then, **Hanwha AI camera report** tab will be added.

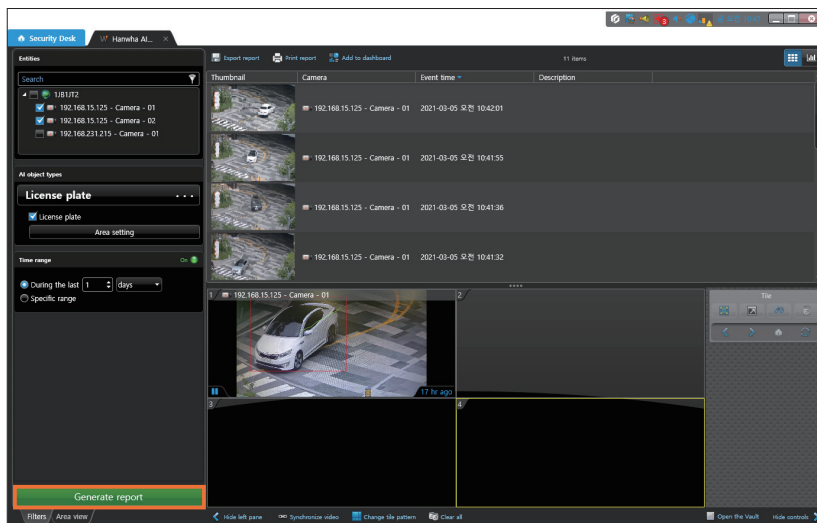


3. Select the camera and time range that you want to search for.
Click the **...** button to select **License plate** for the AI object type.



4. Click the **Generate report** button.

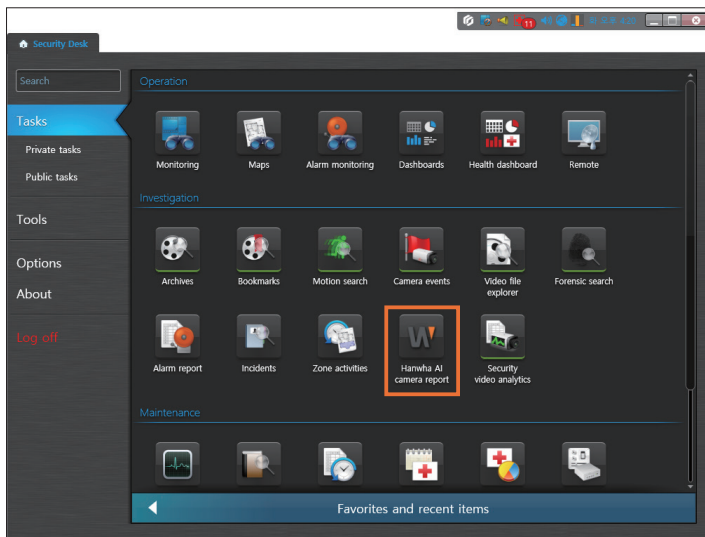
Then, search results are displayed. From the list, you can select an event and play its video.



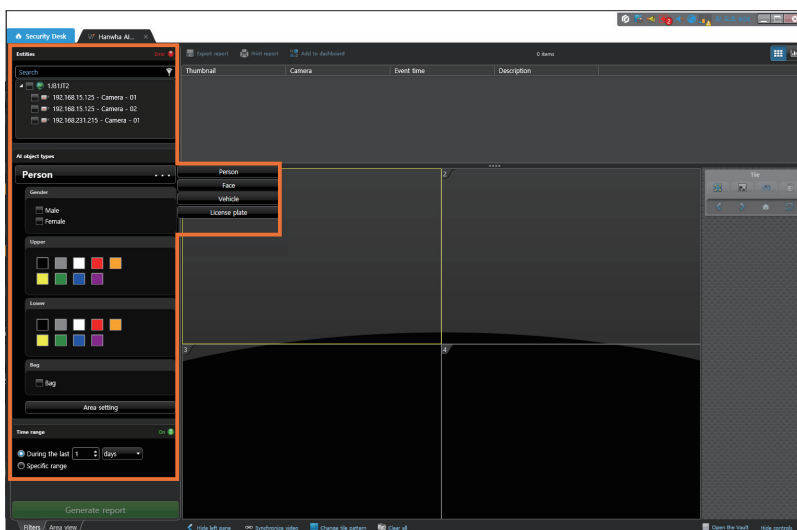
- License plate searches for a vehicle license plate.

Setting Up Event Area

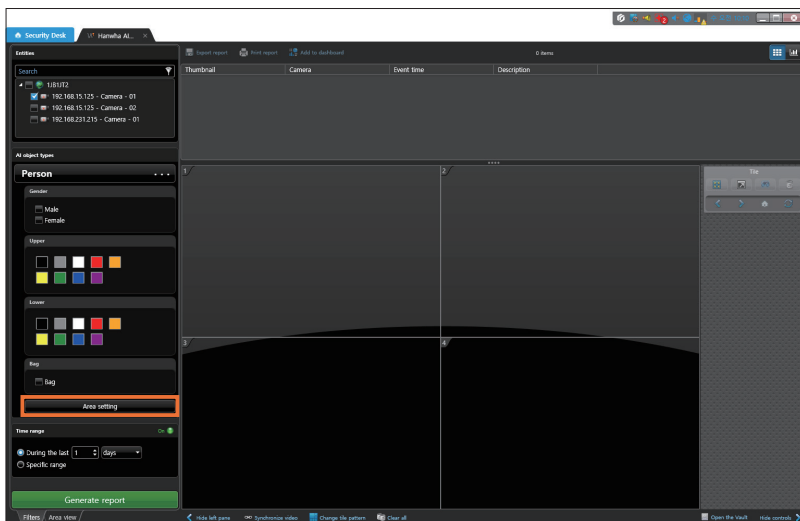
1. Execute **Security Desk** program.
2. Select **Task > Hanwha AI camera report**.
Then, **Hanwha AI camera report** tab will be added.



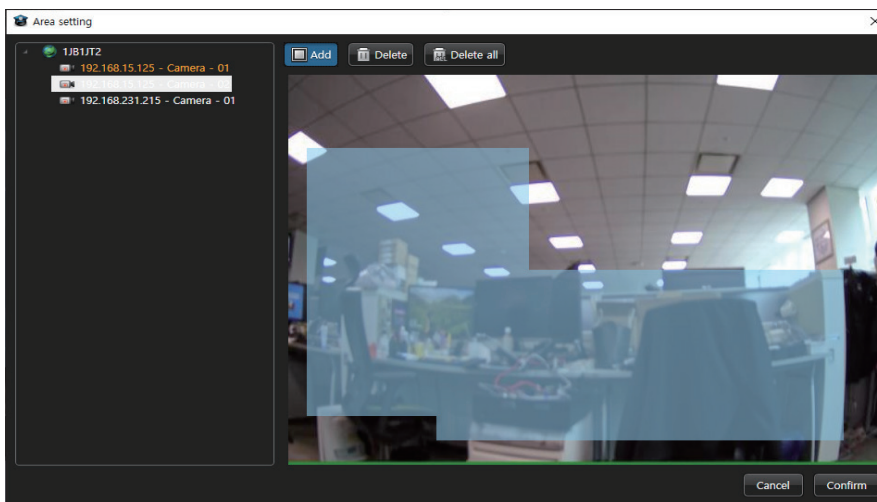
3. Select the camera and time range that you want to search for.
Click the **...** button to select the AI object type that you want to search for.






4. Set the details, and click the **Area setting**.
Then, **Area setting** window appears.



5. Select the camera for area setting, and set the area you want.



-  **Add:** You can drag the mouse to set the area you want.
-  **Delete:** You can drag the mouse to delete a previously set area.
-  **Delete all:** You can delete all areas previously set for the selected camera.



Note

Up to 4 camera areas can be set at the same time.

6. To finish the setup, click **Ok**.

Open Source License Notification on the Product

[MIT License]

LiveCharts

Copyright (c) 2016 JetBrains <http://www.jetbrains.com>

Permission is hereby granted, free of charge, to any person obtaining a copy of this software and associated documentation files (the "Software"), to deal in the Software without restriction, including without limitation the rights to use, copy, modify, merge, publish, distribute, sublicense, and/or sell copies of the Software, and to permit persons to whom the Software is furnished to do so, subject to the following conditions:

The above copyright notice and this permission notice shall be included in all copies or substantial portions of the Software.

THE SOFTWARE IS PROVIDED "AS IS", WITHOUT WARRANTY OF ANY KIND, EXPRESS OR IMPLIED, INCLUDING BUT NOT LIMITED TO THE WARRANTIES OF MERCHANTABILITY, FITNESS FOR A PARTICULAR PURPOSE AND NONINFRINGEMENT. IN NO EVENT SHALL THE AUTHORS OR COPYRIGHT HOLDERS BE LIABLE FOR ANY CLAIM, DAMAGES OR OTHER LIABILITY, WHETHER IN AN ACTION OF CONTRACT, TORT OR OTHERWISE, ARISING FROM, OUT OF OR IN CONNECTION WITH THE SOFTWARE OR THE USE OR OTHER DEALINGS IN THE SOFTWARE.

