

HEAD OFFICE

6, Pangyo-ro 319beon-gil, Bundang-gu, Seongnam-si,
Gyeonggi-do, 13488 South KOREA Tel: 1588-5772
For more information, please visit our website hanwha-security.com

Global Networks

Hanwha Techwin America
Hanwha Techwin Europe
Hanwha Techwin Middle East FZE
Hanwha Techwin Singapore Branch
Hanwha Techwin Russia Office
Hanwha Techwin Hanoi / Ho Chi Minh Office

Scan this QR code to see
details of global network



WISeNET P series 2MP AI Cameras

© 2021 Hanwha Techwin Co., Ltd. All rights reserved.

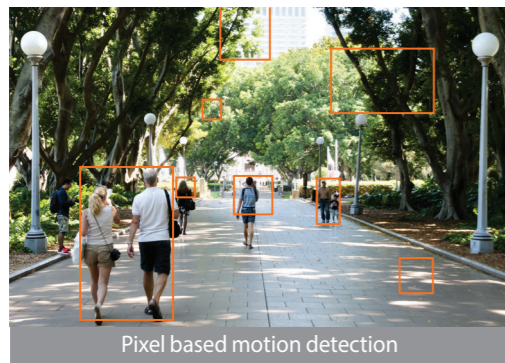
DESIGN AND SPECIFICATIONS ARE SUBJECT TO CHANGE WITHOUT NOTICE
Under no circumstances, this document shall be reproduced, distributed or changed,
partially or wholly, without formal authorization of Hanwha Techwin Co., Ltd.
* Wisenet is the proprietary brand of Hanwha Techwin, formerly known as Samsung Techwin.

06-2021 (M.H)

Hanwha-Security.com

AI based object detection and classification reducing false alarms

The never-ending rush of urban living translates into constant waves of people and vehicles surging through city streets at all hours. As the number of surveillance cameras grows along with the cities, an operator may be presented with too much information to handle, as conventional cameras equipped with motion-based detection generate too many event alarms. With operators under great strain to verify each one, there could be delays in response times. Now, AI algorithms built into Wisenet P series AI cameras are able to dramatically help improve operator efficiency.



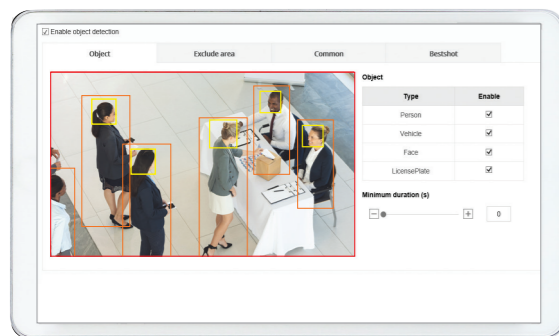
BestShot feature, the most suitable images of objects

WWisenet P series AI 2MP cameras detect and classify objects including people, vehicles, license plates, and faces. It is equipped with a 'BestShot' feature which only the most suitable image of classified objects is sent to a back-end server.



Classify Target Objects with Attributes

Wisenet P series AI cameras differentiates what it sees into broad categories such as 'Person', 'Face', 'Vehicle' and 'license plate'. Delving deeper, Wisenet AI algorithms are quickly and accurately able to identify the different attributes of the objects within the camera's field of view. For example, the camera sees a person and immediately detects the color of clothing. It is also intelligent enough to distinguish whether the person is wearing glasses or holding a bag. These attributes are then saved as metadata alongside the captured footage.

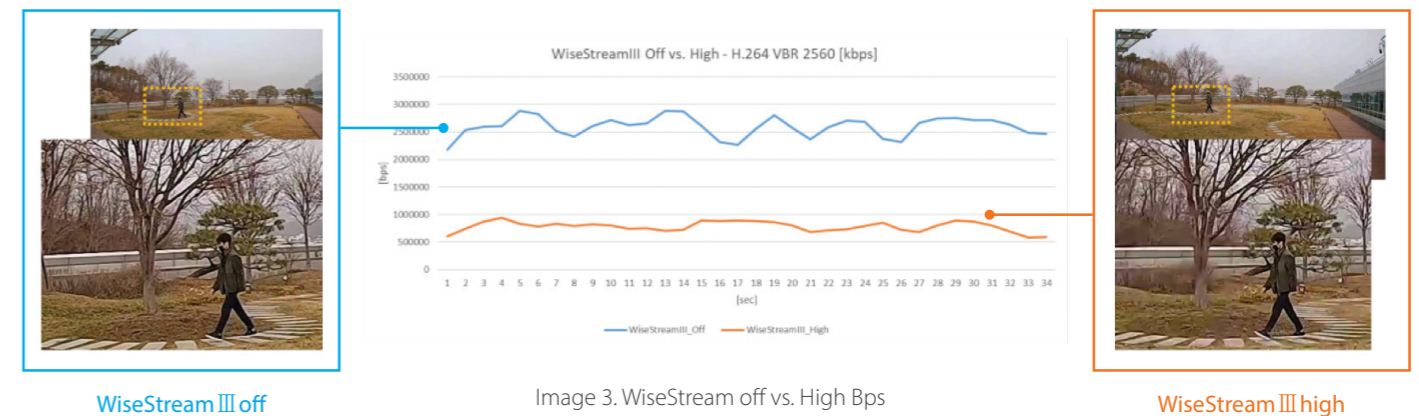


Wisenet Webviewer



WiseStream III, AI-based bandwidth control

Wisenet P series AI 2MP cameras also support the company's proprietary WiseStreamIII technology. It identifies key objects such as people and/or vehicles based on the edge-based AI and compresses background data drastically. This curtails data size and minimizes bandwidth for better operational efficiency in managing data storage.



WiseNR II , AI-based resolving image blur

Moreover, Wisenet P series AI 2MP cameras support the latest noise reduction technology, WiseNR II (Wise Noise Reduction II), which utilizes AI object detection technology to identify object appearance/ movements and remove motion blur adaptively in low light environments with large amounts of noise. It effectively resolves the issue of image blur and ghosts effect caused by excessive noise reduction.



WiseNR2 (off)

WiseNR II (on)

Plug-in support for VMS

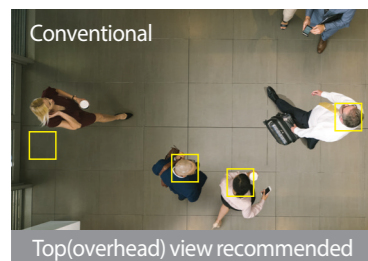
Wisenet P series AI cameras offers integration of video management system from Milestone, Genetec using Hanwha's plugin and Wisenet WAVE. This plugin supports seamless integration so that users can easily search the AI events on Milestone, Genetec, and Wisenet WAVE.

(Compatible VMS : Milestone, Genetec, Wisenet WAVE)

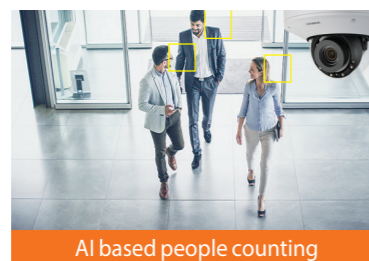


Retail Insight, analyzing customer demographics

Store operators are able to combine Wisenet P series AI cameras with the Retail Insight v2.0 business intelligence application, to granularly look at what is happening within their stores, with the cameras using attribution identification to help track customer demographics, age and gender.

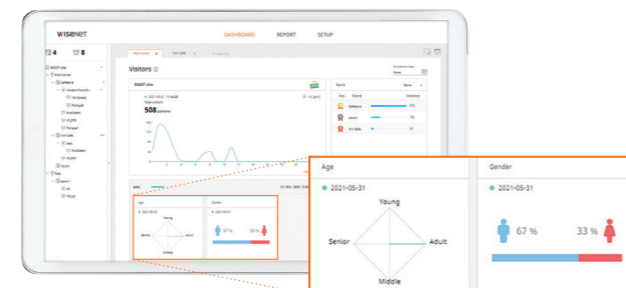


Top(overhead) view recommended



AI based people counting

Wisenet Retail Insight v2.0



Enhanced WDR

The enhanced WDR technology(line by line type) built into the Wisenet P series AI cameras helps produce clear images from scenes containing a challenging mix of bright and dark areas and reduces the ghost effect which can occur with conventional multi-frame WDR.



Short Expoure

WDR image

Long Expoure

Digital PTZ

Wisenet P series AI cameras support 2 channel streaming. Channel 1 can be used for full screen video display with channel 2 simultaneously streaming the digital PTZ auto tracking of an object.



Digital auto tracking of a person

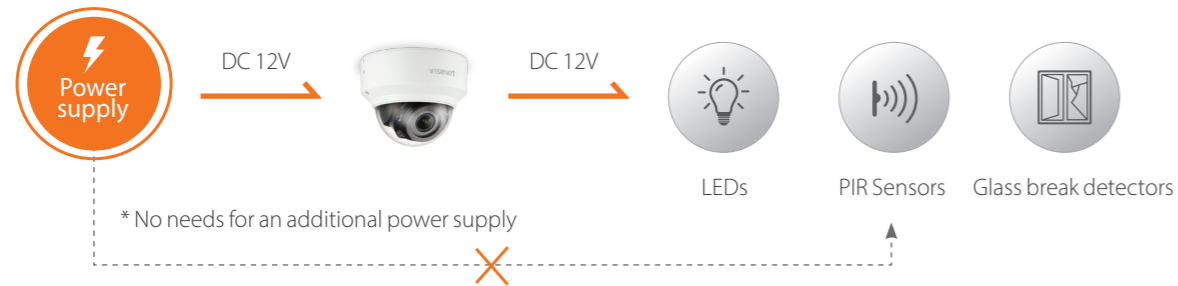
Easy installation with modular structure

The cameras designed to significantly reduce the time normally needed for installation, set-up and maintenance adjustments. With a four-part magnetic modular design which simplifies the installation process, Wisenet P series AI cameras are equipped with a number of other practical features which help minimize the time installers have to spend on site.



DC output for connected devices

Wisenet P series AI cameras come with a 12V DC power supply with maximum 50mA to enable connection of sensor devices, eliminating the need for additional power supply. They also have alarm in/out ports so that connected devices such as LEDs can be activated when a camera detects (classifies) a person.

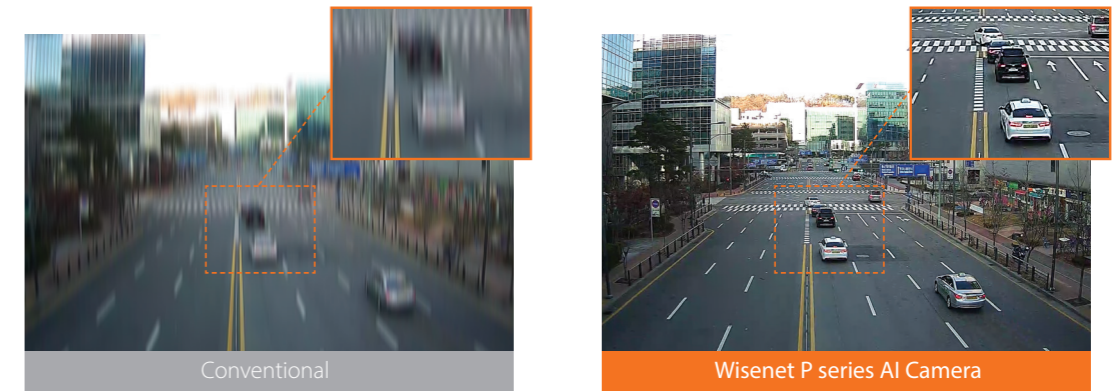


* Example of operation scenario



Digital Image Stabilization(DIS)with built-in gyro sensor

Advances in Wisenet image stabilisation technology allow for the reduction of motion blur caused by wind or vibration. A gyroscopic sensor plus DIS technology is specifically designed and engineered into select Wisenet P series AI cameras, resulting in sharp, stable images.



Models

